



REF: # 11359

ORIHUELA COSTA



INFO

PRIX: 249.000 €

TYPE:

CITY: Orihuela Costa

CHAMBRES: 2

Ba ENFANTS: 2

Built (m2): 74

pas (m2): -

Terrasse (m2): -

A ENFANTS: -

de plante: -

MESSAGE -



DESCRIPTION

NEW BUILD APARTMENTS IN LAS FILIPINAS New Build Residential complex in Las Filipinas. The gated community has a total of 94 apartments of 2 and 3 bedrooms and 1 or 2 bathrooms. Open plan kitchen with living room and terraces. The communal areas are roughly 3.300 m2 big and 2 pools, jacuzzi and 2 boules courts. W-Fi will be available in all communal areas. This residential located in the area of Villamartin Golf (Orihuela Costa), and is designed to fulfil the needs of those who are looking for the Mediterranean lifestyle, in a quiet area in a quiet but well established area and yet close to the sea (8 minutes) and very close to all amenities. Complex located 40 minutes from Alicante airport and 1 hour Murcia - Corvera airport.

CERTIFICAT ÉNERGÉTIQUE



VIEW

- Panoramico



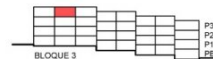
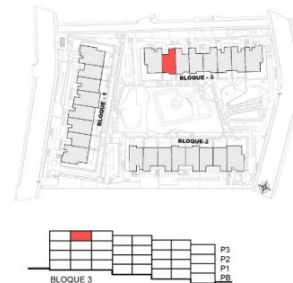
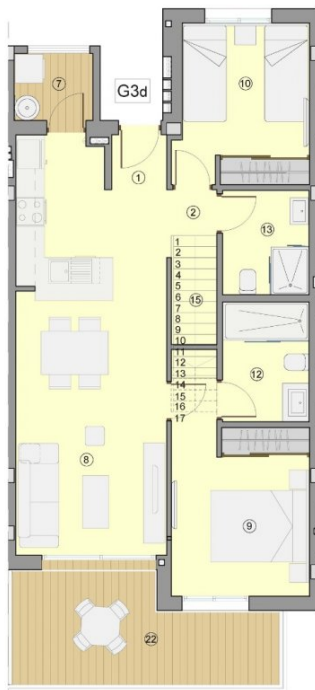












nº	SUPERFICIES ÚTILES / FLOOR AREA / SURFACES UTILES	TIPO / TYPE / TYPE
1	VESTIBULO / HALL / ENTRÉE	G3d
2	DISTRIBUIDOR / CORRIDOR / CIRCULATION	0,91 m²
8	SALON-COMEDOR-COCINA / LIVING-DINING ROOM- KITCHEN / SALON-SALLE A MANGER- CUISINE	26,39 m²
7	GALERIA / GALLERY / GALLERIE (100%)	2,38 m²
9	DORMITORIO 1 / BEDROOM 1 / CHAMBRE 1	11,69 m²
10	DORMITORIO 2 / BEDROOM 2 / CHAMBRE 2	9,24 m²
12	BAÑO 1 / BATHROOM 1 / SALLE DE BAINS 1	4,52 m²
13	BAÑO 2 / BATHROOM 2 / SALLE DE BAINS 2	3,95 m²
14	ESCALERA / STAIRS / ESCALIER	2,05 m²
TOTAL SUP. ÚTILES / TOTAL FLOOR AREA / TOTAL SURFACES UTILES		62,44 m²
SUP. CONSTRUIDA INTERIOR / BUILT INTERIOR AREA / SURFACE CONSTRUITE EN TÉRIEUR		74,02 m²
22	SUP. CONSTRUIDA TERRAZA DESCUBIERTA 1 / BUILT OPEN 1 AREA / SURFACE CONSTRUITE TERRASSE DÉCOUVERTE	12,53 m²
20	SUP. CONSTRUIDA SOLARIUM 1/2 / BUILT SOLARIUM 1 AREA / SURFACE CONSTRUITE SOLARIUM	43,40 m²
TOTAL SUP. CONSTRUIDA PRIVADA / TOTAL BUILT PRIVATE AREA / TOTAL SURFACE CONSTRUITE PRIVATIVE		129,95 m²

TIPO/TYPE/TYPE **G3d**

0 1 m 3 m 5 m

52	Piscine adultes	Adult pool	Piscine enfants	76	Buñuelos	Berles aux lettres
65	Piscine infantil	Children pool	Piscine enfants	81	Selle aparcamiento	Parking rail
66	Entrada personal	Entrance	Entrée	82	Acceso personal a aparcamiento	Entrée personnel au parking
67	Entrada aparcamiento	Parking entrance	Entrée parking	90	Duchas	Douche
74	Jacuzzi	Jacuzzi	Jacuzzi	114	Juegos pinball	Jeux pinball
76	Aparcamiento bici	Bike parking	Parking a vélos	121	Centro de transformación	Transformateur







"OUR EXPERIENCE IS YOUR GUARANTEE"