



REF: # 10472

COSTA MURCIA



#### INFO

PRIX:	239.000 €
TYPE:	Maison
CITY:	Costa Murcia
CHAMBRES:	3
Ba ENFANTS:	2
Built ( m2 ):	107
pas ( m2 ):	107
Terrasse ( m2 ):	-
A ENFANTS:	-
de plante:	-
MESSAGE	-



#### DESCRIPTION

NEW BUILD TOWNHOUSES IN AVILESES Residencial complex of 14 townhouses in Avileses, Murcia. Townhouses have different terraced areas and large solarium, allowing you to enjoy all hours of sunshine every day of the year, with private swimming pool and parking on the plot . Each property has 3 bedrooms and 2 bathrooms. The properties have been designed on three levels with a contemporary style and open planned concept, comprising a fully-fitted kitchen and lounge-dining room. The properties will meet the highest standards and will be equipped with: Private pool with sher. Kitchen completely furnished and equipped with Balay electrical appliances: ceramic hob, oven and microwave on top, extractor fan, integrated fridge and dishwasher. Fully fitted bathrooms with: suspended toilet, vanity unit, mirror and rainfall shower column. Lined wardrobes with drawers. Interior lighting in kitchen, living room, hallway and bathrooms with led spotlights. Wall integrated led spotlights at the garden and solarium. Pre-installation for air conditioning. The development is located in Avileses (Murcia), surrounded by all services and sports facilities, near several Golf

Courses such as La Torre Golf and Hacienda Riquelme, plus being 20 minute drive to Murcia airport and 15 minute far from Mar Menor and Mediterranean beaches.



## VIEW

- Panoramico

## JARD RIVIÈRE ET TERRASSES N

- Terrasse ouverte
- Jard RIVER n privée

## EXTRA

- Porte de sécurité

PROPERTY GALLERY







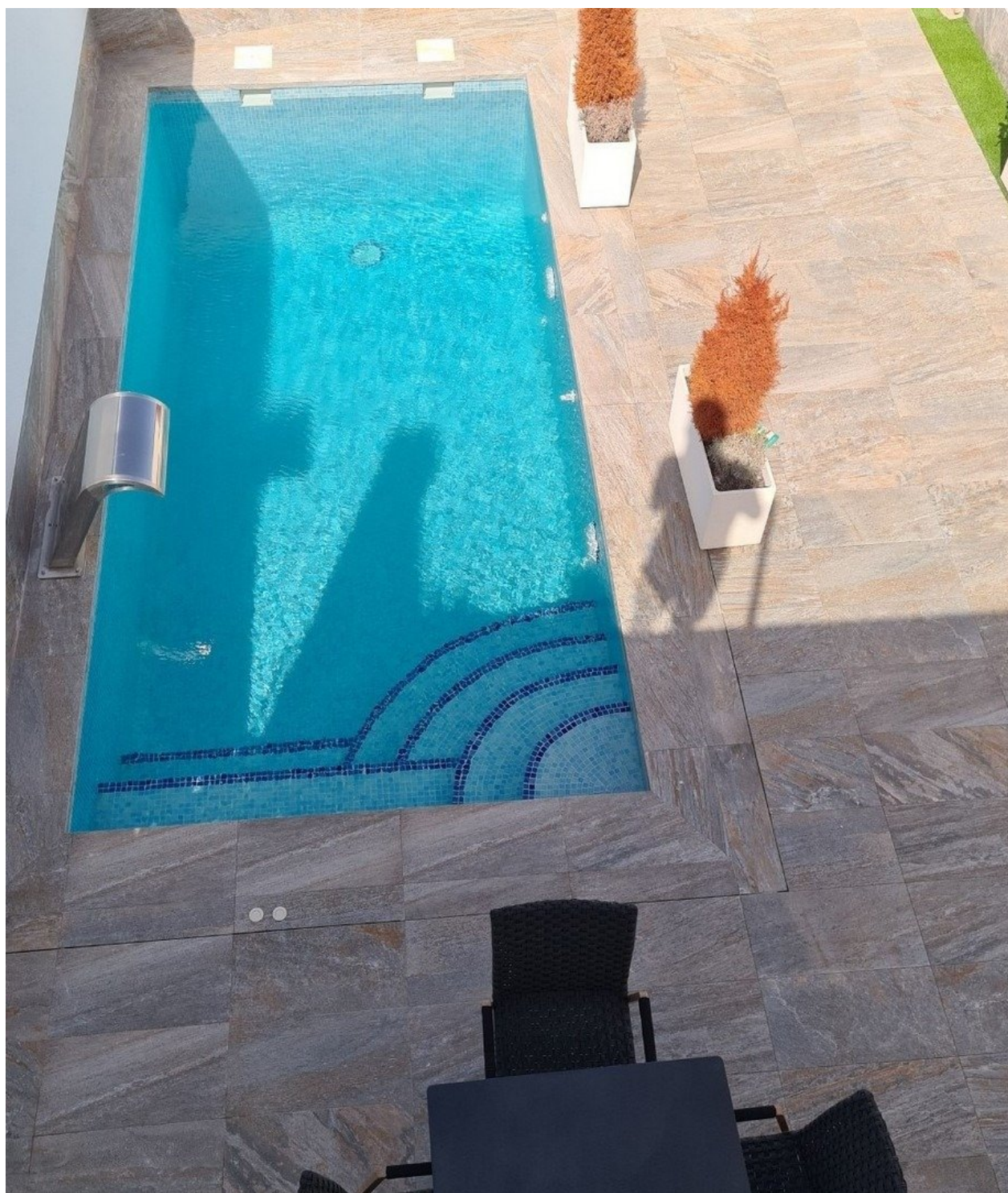










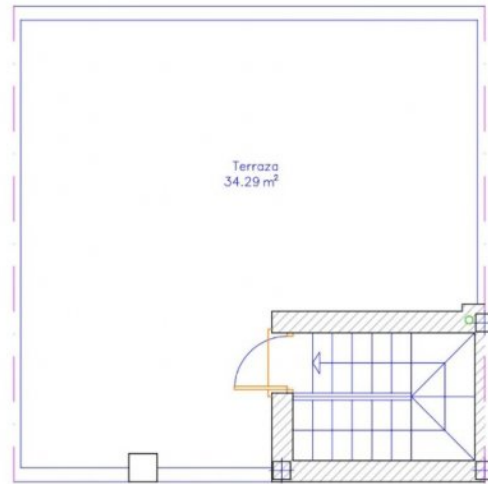
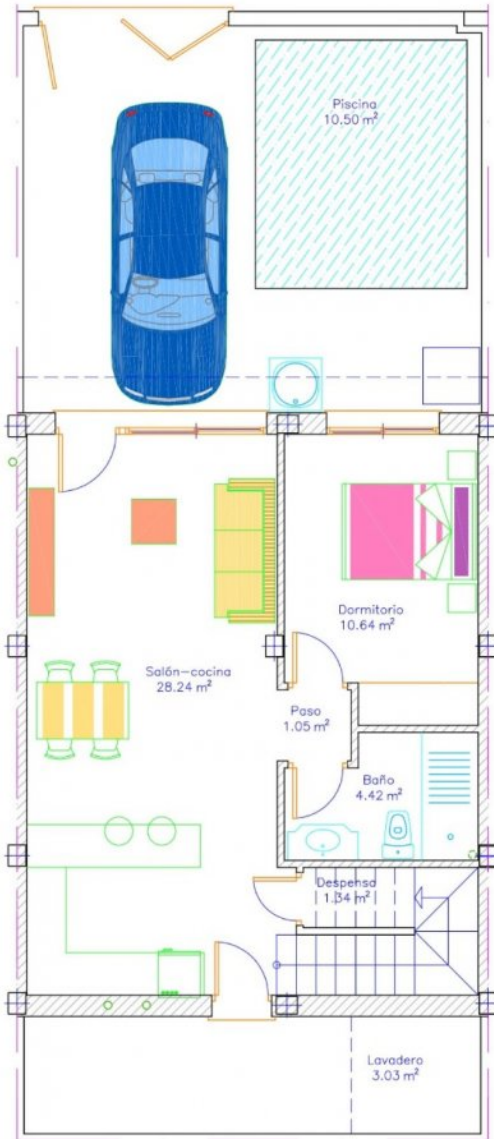




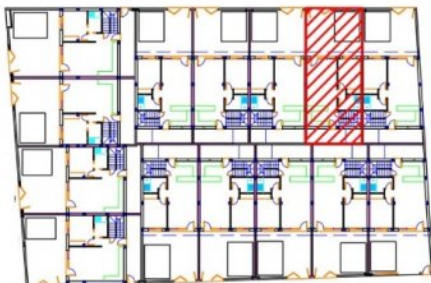
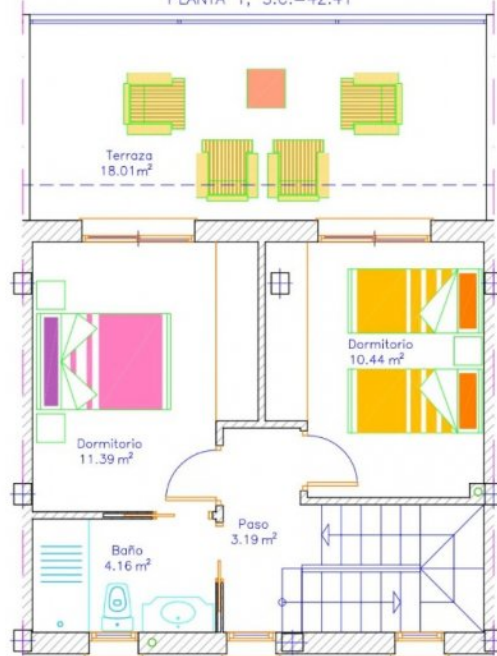


TORREON, S.C.=2.84

PLANTA 0, S.C.=61.84



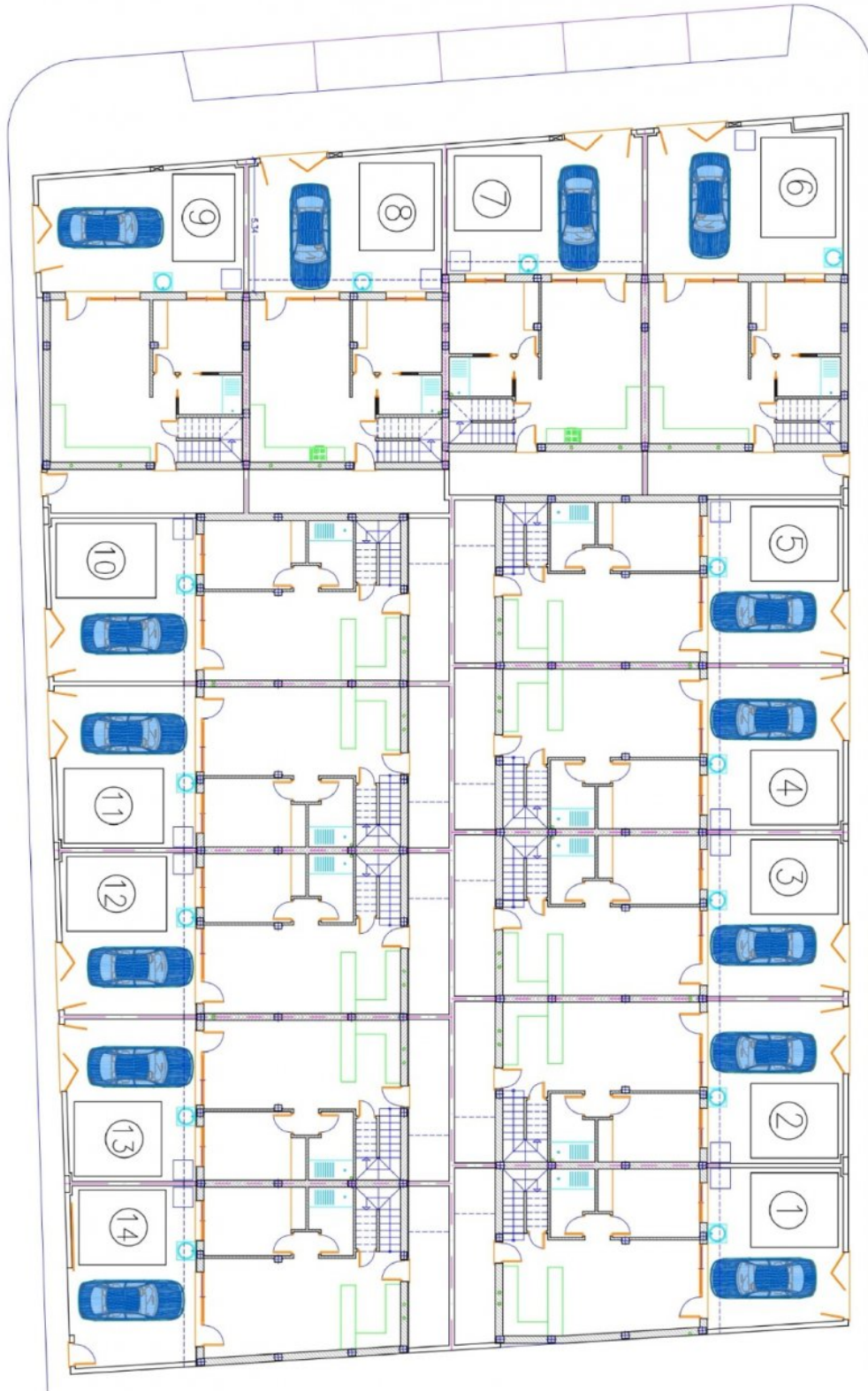
PLANTA 1, S.C.=42.41



VIVIENDA 2

Sup. parcela=107,08m2  
 Sup. construida=107,09m2  
 Sup. terrazas=52,30m2  
 Sup. piscina=10,50m2





**"OUR EXPERIENCE IS YOUR GUARANTEE"**