



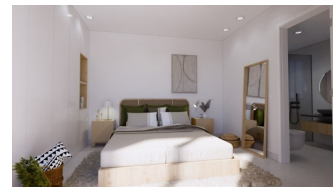
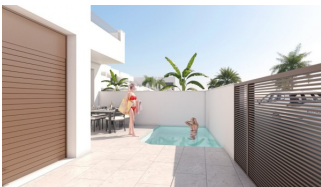
REF: # 10470

ORIHUELA COSTA



INFO

PRIX:	365.900 €
TYPE:	Maison
CITY:	Orihuela Costa
CHAMBRES:	3
Ba ENFANTS:	3
Built (m2):	220
pas (m2):	32
Terrasse (m2):	-
A ENFANTS:	-
de plante:	-
MESSAGE	-



DESCRIPTION

NEW BUILD TOWNHOUSES IN PILAR DE LA HORADADA New Build exclusive residential of modern townhouses and bungalow apartments in Pilar de la Horadada. New Build townhouses with 3 bedrooms 3 bedrooms. The living space consists of a large open plan living / dining room and fully equipped kitchen with large sliding doors incorporating the outside space. The bedrooms have plenty of space, a built-in wardrobes. The bathrooms are fully furnished and equipped with shower screens, cabinets and mirrors with pleasant low-level LED and mirror lighting and underfloor heating. All homes have a private parking space. Pilar de la Horadada is a typical Spanish village in the most southern part of the Costa Blanca. The large main street has supermarkets, lots of shops, restaurants and bars and some lovely squares. The beautiful beaches of Torre de la Horadada and Mil Palmeras with fine sand promenade is just 5 minutes away. The airports of Corvera (Murcia) and Alicante are respectively 40 and 55 minutes away

CERTIFICAT ÉNERGÉTIQUE



VIEW

- Panoramico

JARD RIVIÈRE ET TERRASSES N

- Terrasse ouverte
- Jard RIVER n privée

EXTRA

- Porte de sécurité



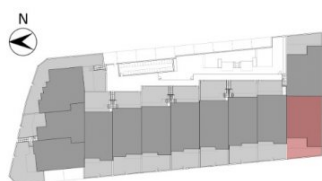






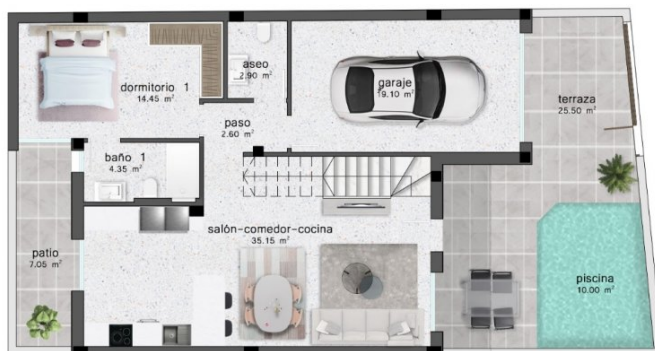


PLANTA PRIMERA

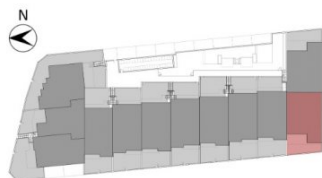


VIVIENDA DUPLEX 3 DORMITORIOS

CUADRO DE SUPERFICIES			
Planta	Uso	S. Útil	S. Const.
Baja	Vivienda	78.60 m2	94.55 m2
	Terraza	25.50 m2	25.50 m2
	Patio	7.05 m2	7.05 m2
	Piscina	10.00 m2	10.00 m2
Primera	Vivienda	33.40 m2	42.06 m2
	Terraza	41.75 m2	41.75 m2
Total m2		196.30 m2	220.91 m2



PLANTA BAJA



VIVIENDA DUPLEX 3 DORMITORIOS

CUADRO DE SUPERFICIES			
Planta	Uso	S. Útil	S. Const.
Baja	Vivienda	78.60 m2	94.55 m2
	Terraza	25.50 m2	25.50 m2
	Patio	7.05 m2	7.05 m2
	Piscina	10.00 m2	10.00 m2
Primera	Vivienda	33.40 m2	42.06 m2
	Terraza	41.75 m2	41.75 m2
Total m2		196.30 m2	220.91 m2





"OUR EXPERIENCE IS YOUR GUARANTEE"