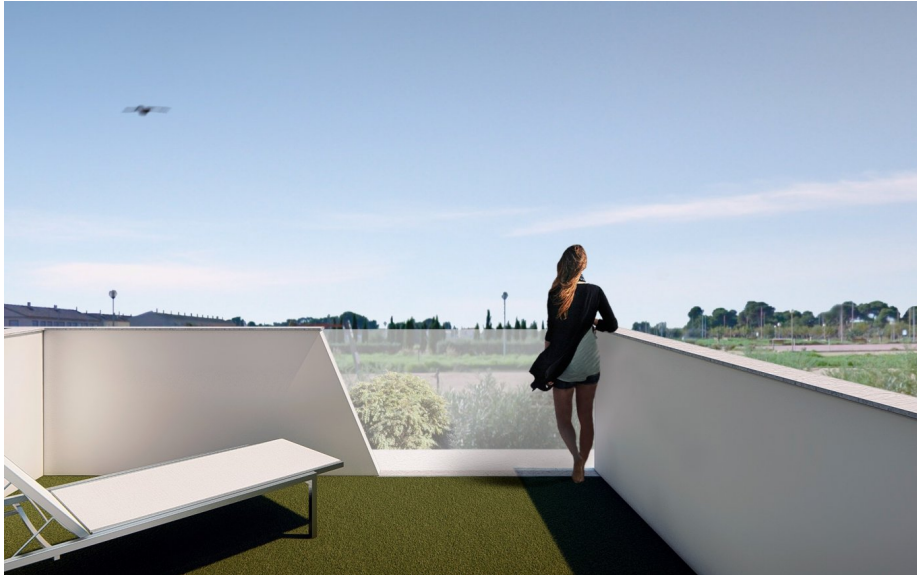




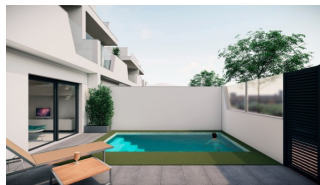
REF: # 9697

COSTA MURCIA



#### INFO

|                  |                       |
|------------------|-----------------------|
| PRIX:            | 324.000 €             |
| TYPE:            | Villa (Semi detached) |
| CITY:            | Costa Murcia          |
| CHAMBRES:        | 3                     |
| Ba ENFANTS:      | 3                     |
| Built ( m2 ):    | 111                   |
| pas ( m2 ):      | 162                   |
| Terrasse ( m2 ): | -                     |
| A ENFANTS:       | -                     |
| de plante:       | -                     |
| MESSAGE          | -                     |



#### DESCRIPTION

NEW SEMIDETACHED VILLAS WITH PRIVATE POOL 800 m TO BEACH Luxury complex of 10 semidetached villas with private pool, terrace areas and solarium that allows you to enjoy all hours of sunshine, every day of the year. Each villa has 3 bedrooms and 3 fitted bathrooms. Designed on two levels with a contemporary style and open plan concept, comprising a fully-fitted kitchen with island area and lounge-dining room. 6 villas are South facing looking to a park, 2 are East facing and 2 are West facing. The development is located in Santiago de la Ribera (Murcia), 800 metres far to the beach, surrounded by services, parks, sports facilities, several Golf Courses. The property will meet the highest standards and will be equipped with: Private swimming pool with shower. Kitchen with island work zone, completely furnished and equipped with oven, microwave, fridge, integrated dishwasher, hob and extractor fan. Lighting: Spotlights inside the villa (dining room, kitchen, corridors and bathrooms), and lights in outdoor áreas. Lined wardrobes with drawers. Fully fitted bathrooms with suspended toilet, vanity unit, mirror and shower screens. Electric radiant heating in all bathroom floors.

Pre-installation for air conditioning. Solarium with summer kitchen.  
Parking space in the plot.



## VIEW

- Panoramico

## JARD RIVIÈRE ET TERRASSES N

- Terrasse ouverte
- barbecue / grill
- Jard RIVER n privée











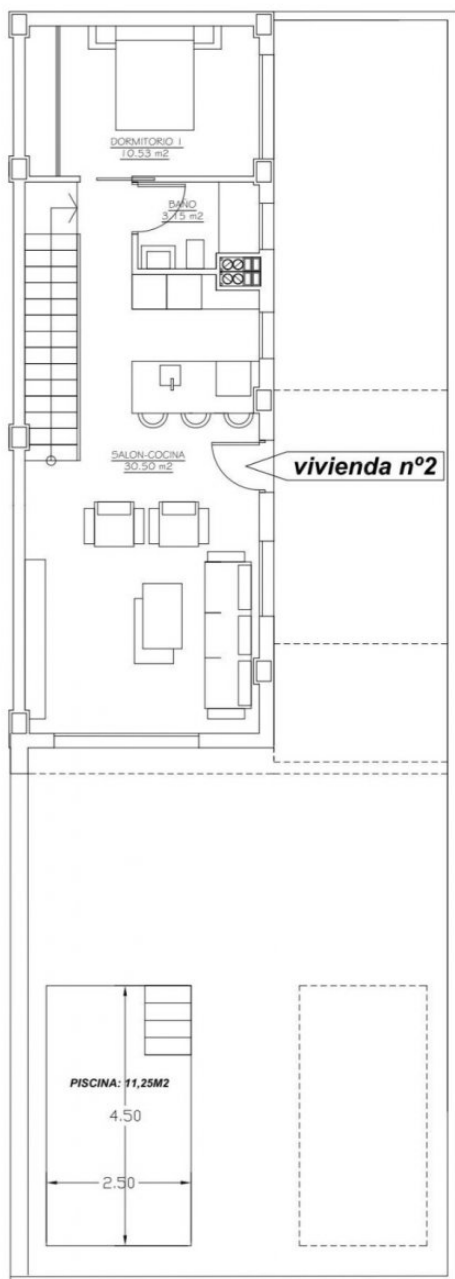




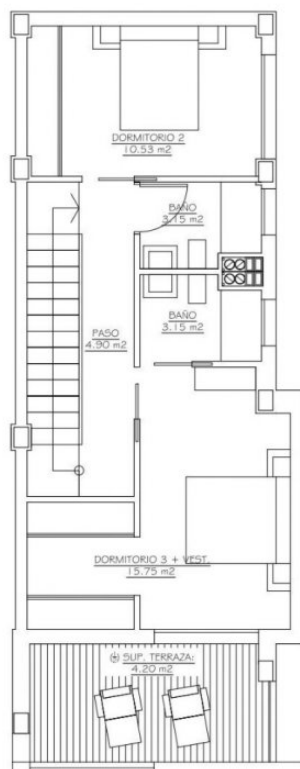




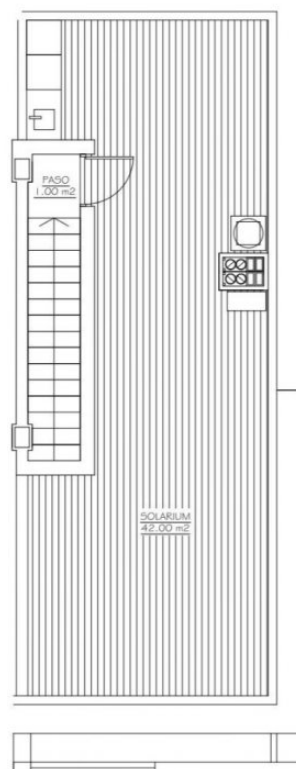
## Planta Baja



## Planta 1ª



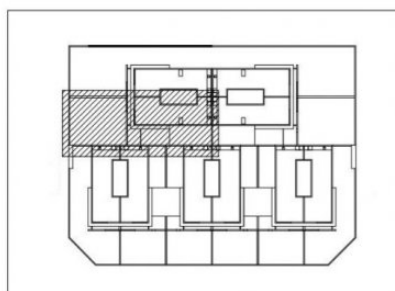
## Solarium



**VIVIENDA 2: superficie parcela: 162,00m<sup>2</sup>**

SUPERFICIE CONSTRUIDA: 111.38 m<sup>2</sup>

SOLARIUM: 42.00 m<sup>2</sup>



**"OUR EXPERIENCE IS YOUR GUARANTEE"**