



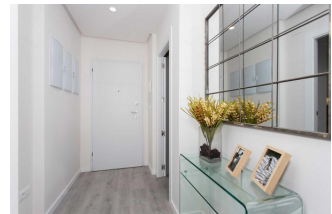
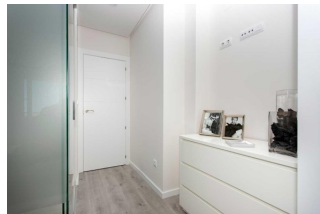
REF: # 9493

ORIHUELA COSTA (VILLAMARTIN LOS DOLSES )



#### INFO

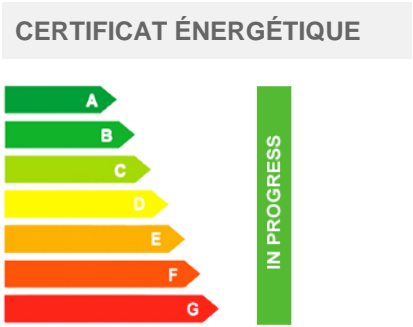
<b>PRIX:</b>	268.000 €
<b>TYPE:</b>	Appartement
<b>CITY:</b>	Orihuela Costa (Villamartin Los Dolses )
<b>CHAMBRES:</b>	2
<b>Ba ENFANTS:</b>	2
<b>Built ( m2 ):</b>	71
<b>pas ( m2 ):</b>	-
<b>Terrasse ( m2 ):</b>	50
<b>A ENFANTS:</b>	-
<b>de plante:</b>	-
<b>MESSAGE</b>	283.000 €



#### DESCRIPTION

MODERN STYLE COMPLEX RESIDENTIAL 2 BED APARTMENT 2ND FLOOR IN VILLAMARTIN, ORIHUELA COSTA - overlooking the garden area. This 71m2 2nd floor apartment consists of 2 bedrooms, 2 bathrooms, 2 terraces one of which overlooks the garden area. You can relax all year round in the spa area with heated pool, sauna and gym. Enjoy the spectacular views of the natural and protected green area from your apartment or from the large floating platform located in the pool area. For the more athletic, the complex has a semi-Olympic pool. Children can enjoy themselves in the play area or in the beach-type pool. The residential is designed to enjoy the wonderful Mediterranean climate, the beach, the sun and the tranquility. It is located in a privileged area, just 2 kilometers from La Zenia beach, one of the best beaches on the Costa Blanca. In a consolidated area and with all the services at your fingertips such as supermarkets, pharmacies, public transport, banks, with good connections and just 500 meters from the entrance to the AP-7 motorway. The Zenia Boulevard shopping center, one of the largest in

the region with more than 80,000 square meters, is just 1 kilometer away. Three of the best 18-hole golf courses such as the Real Club de Golf de Campoamor, Golf Villamartín and Las Ramblas de Campoamor are located just 2 kilometers from the complex. An underground parking space is included in the price. Alicante Airport and Murcia (Covera Airport) are approximately 55 minutes drive away.



<b>STYLE</b>	<b>VIEW</b>	<b>CLIMATISATION</b>	<b>DISTANCE :</b>
<ul style="list-style-type: none"><li>• moderne</li><li>• contemporain</li></ul>	<ul style="list-style-type: none"><li>• Panoramico</li></ul>	<ul style="list-style-type: none"><li>• Central</li></ul>	Beach : 2 Km aéroport: 60 Km
<b>MEUBLÉ</b>	<b>PARKING PAS. CAR</b>	<b>ZONES</b>	<b>CUISINE</b>
<ul style="list-style-type: none"><li>• Vide</li></ul>	: 1	<ul style="list-style-type: none"><li>• salle de jeux</li><li>• Sauna</li><li>• Gymnasio</li></ul>	<ul style="list-style-type: none"><li>• cuisine</li><li>• cuisine équipée</li><li>• granit</li></ul>
<b>JARD RIVIÈRE ET TERRASSES N</b>	<b>EXTRA</b>		
<ul style="list-style-type: none"><li>• Terrasse couverte</li><li>• Terrasse ouverte</li><li>• Playground</li><li>• clôtures</li><li>• murs en pierre</li><li>• Jard RIVER Communauté</li></ul>	<ul style="list-style-type: none"><li>• intégré</li><li>• Double vitrage</li></ul>		

































**"OUR EXPERIENCE IS YOUR GUARANTEE"**