



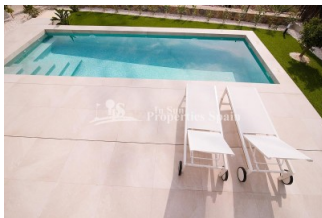
REF: # 6961

ORIHUELA COSTA (LOS MONTESINOS)



INFO

PRIX:	499.000 €
TYPE:	Villa
CITY:	Orihuela Costa (Los Montesinos)
CHAMBRES:	4
Ba ENFANTS:	3
Built (m2):	157
pas (m2):	367
Terrasse (m2):	96
A ENFANTS:	
de plante:	-
MESSAGE	375.000 €



DESCRIPTION

Located within 200 metres from supermarkets, restaurants and bars you will find these spacious 4 bedroom SOUTH FACING 157m2 villas in La Herrada, LOS MONTESINOS. Each comes with private 4X8m swimming pool and with a high standard. The plot size is from 367m2. When entering the villa you will find an entrance with a wardrobe for hanging jackets etc. In-front you will find an open kitchen, dining area and living room. The big windows brings in lots of natural light into the property. Behind the kitchen you will find two spacious double bedrooms, a bathroom and a practical washing room under the stair case to the first floor. On the first floor you will find another guest bathroom, bathroom and the master bedroom. The master bedroom has en-suite bathroom. From the master bedroom and a hall way you have access to the solarium of 30 m2, from where you are overlooking the private terrace, garden and the surrounding area including the salt lake in Torrevieja and the natural lagoon. Each plot offers private parking, storage room and lots of terrace plus a private swimming pool of 4x8 meters. The villas comes with 4 bedrooms as standard. However you also have the

possibility to take away one of the bedrooms on the ground floor and have an even bigger kitchen, dining area and living room. The villas are located in the lovely town Los Montesinos. Here you will find a nice selection of restaurants, supermarkets and shops. The lovely plaza by the townhall offers the true Spanish atmosphere. A short drive takes you to Torrevieja, Ciudad Quesada or the stunning sandy beaches of La Mata. Also available villas with 3 bedrooms and 2 bathrooms from 369.000€



STYLE <ul style="list-style-type: none">modernecontemporain	CLIMATISATION <ul style="list-style-type: none">Central	DISTANCE : <div>Beach : +10 Km</div> <div>aéroport: 50 Km</div> <div>: 200 m</div>	POSITION <div>Sur</div>
MEUBLÉ <ul style="list-style-type: none">Vide	PARKING PAS. CAR <div>: 1</div>	ÉTAGE <ul style="list-style-type: none">tuilesStone	CUISINE <ul style="list-style-type: none">cuisinecuisine équipéegranit
JARD RIVIÈRE ET TERRASSES N <ul style="list-style-type: none">Terrasse couverteTerrasse ouvertePaysageJard RIVER n privée	EXTRA <ul style="list-style-type: none">intégréPorte de sécuritéDouble vitrage		









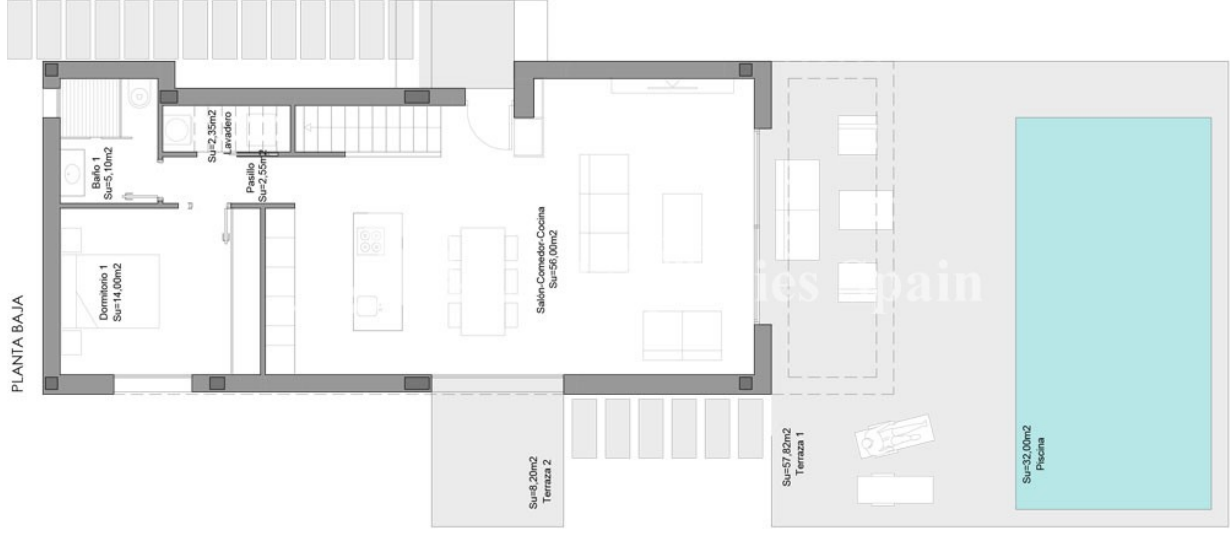




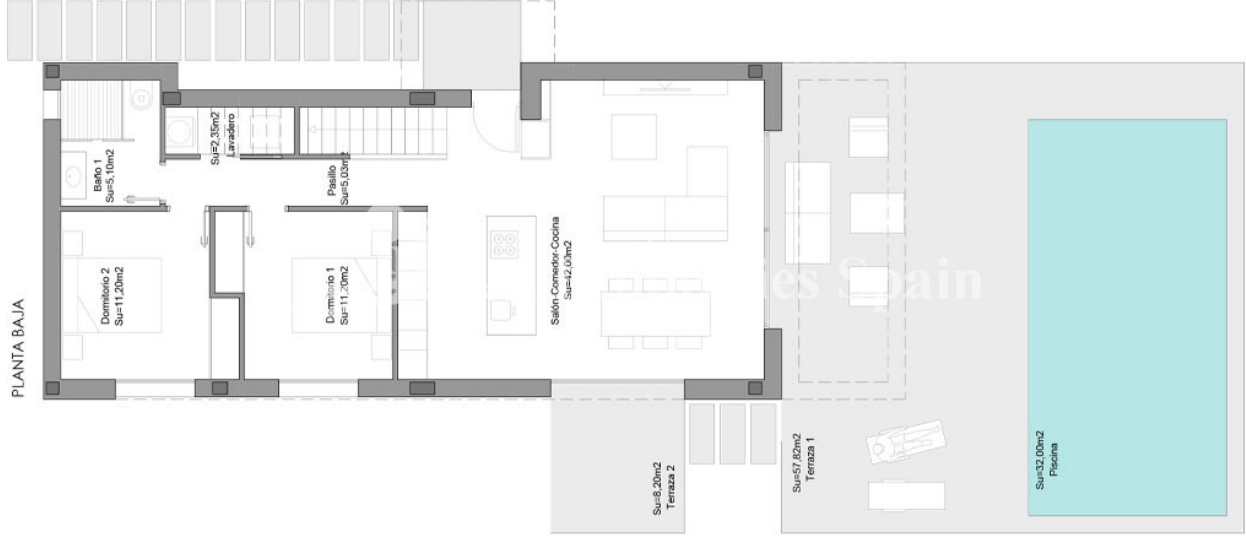


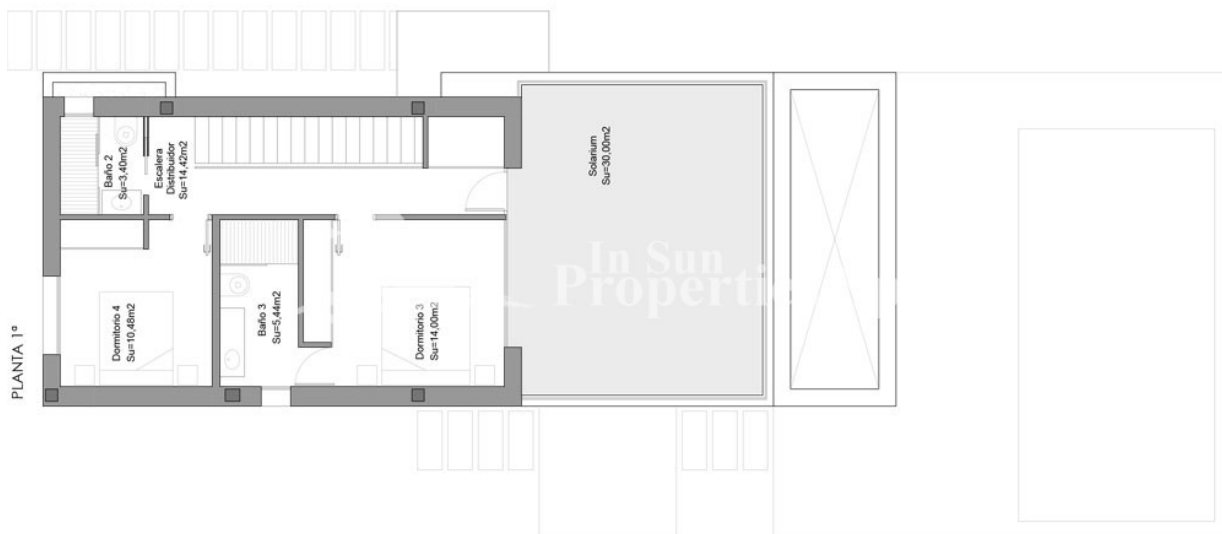


PLANTA BAJA



PLANTA BAJA





"OUR EXPERIENCE IS YOUR GUARANTEE"