



REF: # 6034

FINESTRAT



INFO

PRIX: 375.000 €

TYPE: Villa

CITY: Finestrat

CHAMBRES: 3

Ba ENFANTS: 2

Built (m2): 108

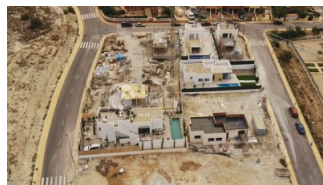
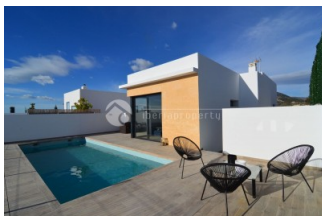
pas (m2): 370

Terrasse (m2): 50+49

A ENFANTS:

de plante: 1

MESSAGE -



DESCRIPTION

New modern villa consisting of 3 bedrooms and 2 bathrooms with stunning views of the Mediterranean and towards the new Puig Campana golf course and towards the mountains. The designer villa are 108m2 on a 370m2 plot with a terrace of about 50m2 and a roof terrace of 49m2 Open kitchen – living room. Kitchen furniture, in modules from floor to ceiling. Counter top/bar in compact type. Built-in sink and drainer. Single Handle Faucet. Light fixtures in kitchen. Appliances and white goods not included. Air conditioning pre installation for heat pump (hot/cold) and distribution by conducts. - Telecommunication installations according to current regulations. - Electrical installation according to R.E.B.T. with quality mechanism. - Controlled mechanical ventilation system for bathrooms and kitchen Bathroom: White suspended toilets and shower tray. - Aluminum blinds in night areas. - Double glazing, all windows can be opened - Aluminum entrance door with three security locking points. Pool. Passable areas paved with printed concrete (perimeter of the house, car area and part of the pool area). Artificial grass in part of the pool area. Gravel on rest of the plot. - 2 fruit trees

CERTIFICAT ÉNERGÉTIQUE



STYLE	VIEW	CLIMATISATION	DISTANCE :
<ul style="list-style-type: none">moderne	<ul style="list-style-type: none">PanoramicoOceanune vue sur la montagne	<ul style="list-style-type: none">Central	Beach : 4 Km aéroport: 50 Km : 2 Km
POSITION	MEUBLÉ	PARKING PAS. CAR	ZONES
Sur	<ul style="list-style-type: none">Vide	Garage no. Car : 1 : 1	<ul style="list-style-type: none">ou chambre Baignade
ÉTAGE	CUISINE	JARD RIVIÈRE ET TERRASSES N	EXTRA
<ul style="list-style-type: none">tuiles	<ul style="list-style-type: none">cuisinecuisine équipée	<ul style="list-style-type: none">Terrasse couverteTerrasse ouverteFeux extérieursirrigation automatiquearbres fruitiersPalmPaysageclôturesmurs en pierrehayonJard RIVER n privée	<ul style="list-style-type: none">intégréPorte de sécuritéDouble vitrageSatellite TVstockageLaundryInternet







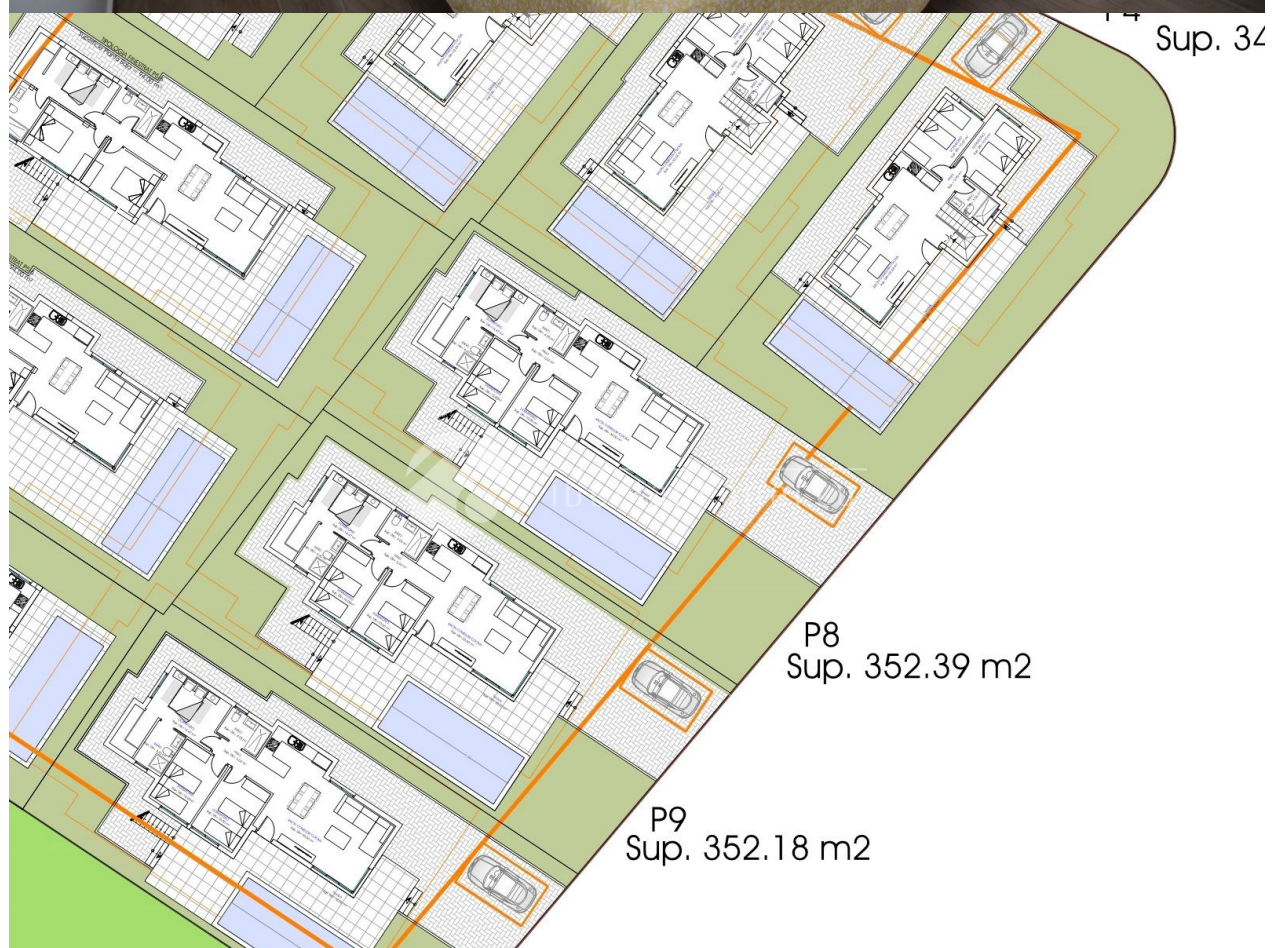












"OUR EXPERIENCE IS YOUR GUARANTEE"