



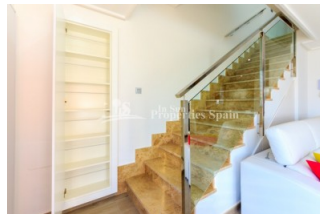
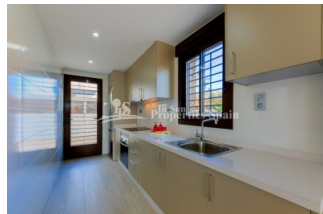
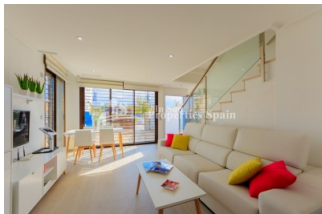
REF: # 5789

ORIHUELA COSTA (TORRE DE LA HORADADA )



#### INFO

PRIX:	214.000 €
TYPE:	Appartement
CITY:	Orihuela Costa (Torre de la Horadada )
CHAMBRES:	3
Ba ENFANTS:	2
Built ( m2 ):	79
pas ( m2 ):	-
Terrasse ( m2 ):	-
A ENFANTS:	
de plante:	-
MESSAGE	208.000 €



#### DESCRIPTION

New stunning project just 400m from the sea at TORRE DE LA HORADADA! from a builder with over 30 years construction experience. 2/3 bedroom, 2 bathroom Bungalows (Apt Ground floor or Top Floor - some with Garage parking and some with roof solarium) that combine mediterranean style with modern and contemporary finish and a beautiful stone facade. All set within lovely communal areas with salt water pool, children's pool and Jacuzzi. 2 bed, 2 bath Ground floor from €224,000 and top floor from €229,000. Also available are 3 bed, 2 bath Townhouses from €280,000. Situated close to both Alicante and Javier Airport, a short walk to the beach, a few minutes from the golf course, leisure areas, supermarkets, hospital and medical centre. Typically Spanish Torre de la Horadada is easily recognisable by its watchtower. It has a large village square, a church, a couple of lovely sandy beaches, a quaint marina and a long promenade which joins the beaches of El Mojón to the south and Mil Palmeras to the north. A perfect place to own a home in the sun! Delivery from April 2020

#### CERTIFICAT ÉNERGÉTIQUE





<b>STYLE</b> <ul style="list-style-type: none"><li>moderne</li><li>contemporain</li></ul>	<b>VIEW</b> <ul style="list-style-type: none"><li>Panoramico</li></ul>	<b>DISTANCE :</b> <div>Beach : 500 m</div> <div>aéroport: 20 Km</div> <div>: 500 m</div>	<b>POSITION</b> <div>Ouest du Sud-Est</div>
<b>MEUBLÉ</b> <ul style="list-style-type: none"><li>Vide</li></ul>	<b>PARKING PAS. CAR</b> <div>Garage no. Car : 1</div> <div>: 1</div>	<b>ÉTAGE</b> <ul style="list-style-type: none"><li>tuiles</li><li>Stone</li></ul>	<b>CUISINE</b> <ul style="list-style-type: none"><li>cuisine</li><li>cuisine équipée</li><li>granit</li></ul>
<b>JARD RIVIÈRE ET TERRASSES N</b> <ul style="list-style-type: none"><li>Terrasse couverte</li><li>Terrasse ouverte</li><li>Paysage</li><li>murs en pierre</li><li>Jard RIVER n privée</li><li>Jard RIVER Communauté</li></ul>	<b>EXTRA</b> <ul style="list-style-type: none"><li>intégré</li><li>Porte de sécurité</li><li>Double vitrage</li></ul>		



























**"OUR EXPERIENCE IS YOUR GUARANTEE"**