



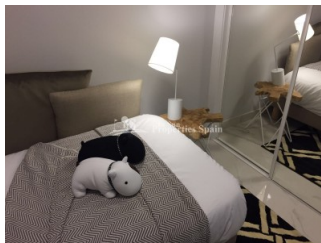
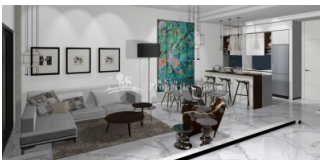
REF: # 4526

ORIHUELA COSTA (GUARDAMAR)



#### INFO

PRIX:	155.000 €
TYPE:	Appartement
CITY:	Orihuela Costa (Guardamar)
CHAMBRES:	2
Ba ENFANTS:	2
Built ( m2 ):	85
pas ( m2 ):	-
Terrasse ( m2 ):	-
A ENFANTS:	
de plante:	-
MESSAGE	-



#### DESCRIPTION

Situated in privileged surroundings, opposite La Laguna de La Mata nature reserve in EL RASO, GUARDAMAR DEL SEGURA is this KEY IN HAND residential development of 29 bungalows, 84-100m2, built in a modern style. This is a private urbanization with spacious green areas and communal swimming pool. Ground floor bungalows with 2 bedrooms, 2 bathrooms and 12-118m2 garden or first floor bungalows with 64m2 roof solarium. The layout is of a modern contemporary style, open plan, allowing for plenty of light. Featuring lounge/dining area, modern kitchen, 2 bedrooms and 2 bathrooms. The development also offers a lovely community gardens. Prices include; pre-installation of AC, Electric heated flooring to the bathrooms, parking and storage room. GROUND FLOOR from €155,000 and TOP FLOOR with SOLARIUM from €175,000. Close to all kind of facilities and to the beach in Guardamar. El Raso is in the town of Guardamar del Segura, north of Torrevieja, a few kilometers inland, next to the salt lake. Because of its location, the temperature is around the year a few degrees warmer than on the coast. Driving time to Torrevieja, about 15 minutes, to Alicante

airport about 35 minutes. There are restaurants within a short walking distance. Multiple supermarkets within a short driving distance.



<b>STYLE</b> <ul style="list-style-type: none"><li>moderne</li><li>contemporain</li></ul>	<b>VIEW</b> <ul style="list-style-type: none"><li>Panoramico</li></ul>	<b>DISTANCE :</b> <div>Beach : 3 Km</div> <div>aéroport: 50 Km</div> <div>: 1 Km</div>	<b>POSITION</b> <div>Ouest du Sud-Est</div>
<b>MEUBLÉ</b> <ul style="list-style-type: none"><li>Vide</li></ul>	<b>PARKING PAS. CAR</b> <div>: 1</div>	<b>ÉTAGE</b> <ul style="list-style-type: none"><li>tuiles</li><li>Stone</li></ul>	<b>CUISINE</b> <ul style="list-style-type: none"><li>cuisine</li><li>cuisine équipée</li><li>granit</li></ul>
<b>JARD RIVIÈRE ET TERRASSES N</b> <ul style="list-style-type: none"><li>Terrasse couverte</li><li>Terrasse ouverte</li><li>Paysage</li><li>Jard RIVER n privée</li><li>Jard RIVER Communauté</li></ul>	<b>EXTRA</b> <ul style="list-style-type: none"><li>intégré</li><li>Porte de sécurité</li><li>Double vitrage</li></ul>		

























***"OUR EXPERIENCE IS YOUR GUARANTEE"***