



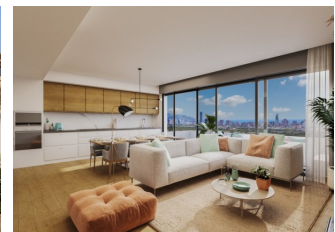
REF: # 11989

FINESTRAT



#### INFO

PRIX:	590.000 €
TYPE:	Maison
CITY:	Finestrat
CHAMBRES:	2
Ba ENFANTS:	2
Built ( m2 ):	156
pas ( m2 ):	-
Terrasse ( m2 ):	-
A ENFANTS:	-
de plante:	-
MESSAGE	-



#### DESCRIPTION

NEW RESIDENTIAL COMPLEX IN FINESTRAT WITH SEA VIEWS !!!  
The residential has in its center a small valley or valley and on each side of this valley there is a block of flats. The houses are oriented to the sea and the South, with large front terraces, spaces that give life. In the residential you can choose houses on ground floors with 3 duplex bedrooms with a terrace on the ground floor and a garden in the basement (where there is a large open space that can be enabled for additional bedrooms), first floors with 2 bedrooms with large terraces or plants 2/3 bedroom penthouse with large private terraces and solarium. All of them with wonderful views of the sea and the Benidorm skyline. The terraced structure of the complex makes the terraces stagger their descent to the valley with large walls of cyclopean stone and classic masonry. Natural stone. Like three thousand years ago. And each platform brings its beauty. The highest with the water, the pools, the viewpoint and the social meeting areas. And the look at the sea, from above, on its right scale. The following terraces bring vegetation and paths to walk them. For meditation, for a walk and to talk with Nature. To be and to watch. Benidorm and its beaches are just 3 km away, with all

the leisure offer you could wish for. Luxury finishes, spacious rooms and terraces, spacious common areas and views of the sea and the Benidorm skyline will make this complex one of the references in the area.



VIEW

- Panoramico







































## VIVIENDA Dúplex con Solarium

# 6C



Planta Principal



Planta Bajo Cubierta

### Superficie Útil Tipo 3 A

#### Planta Principal

1. Distribuidor	3.24 m²
2. Armario	8.78 m²
3. Escalera	2.70 m²
4. Salón-Corredor-Cocina	34.17 m²
5. Dormitorio Ppal.	12.84 m²
6. Dormitorio 2	9.84 m²
7. Baño 1	4.50 m²
8. Baño 2	3.96 m²

9. Terraza 1	18.78 m²
--------------	----------

#### Planta Bajo Cubierta

10. Distribuidor	5.31 m²
11. Armario	0.93 m²
12. Escalera	3.74 m²
13. Estancia	16.85 m²
14. Baño	4.25 m²

15. Terraza 2	11.05 m²
---------------	----------

16. Solarium	42.88 m²
--------------	----------

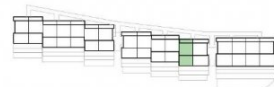
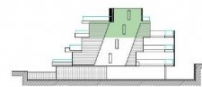
Total Superficie Útil 175.77 m²

#### Superficie Construida (con PP, ZZCC)

Sup. Planta Principal + Bajo Cubierta + PP de ZZCC	147.73 m²
--	-----------

Sup. Terrazas	79.00 m²
---------------	----------

Total Superficie Construida 226.73 m²



Plano sujeto a posibles modificaciones por razones de índole técnica o jurídica. Las superficies son aproximadas. Cocina y amueblamiento orientativo, sin valor contractual.

**"OUR EXPERIENCE IS YOUR GUARANTEE"**