



REF: # 11792



#### INFO

**PRIX:** 234.900 €

**TYPE:**

**CITY:**

**CHAMBRES:** 2

**Ba ENFANTS:** 1

**Built ( m2 ):** 66

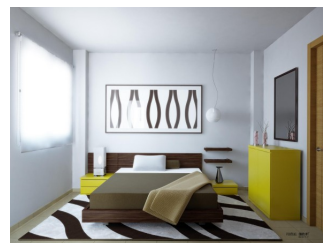
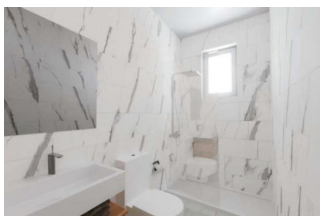
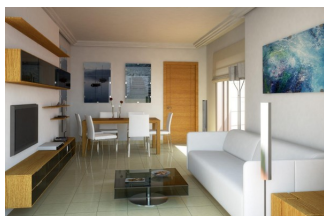
**pas ( m2 ):** -

**Terrasse ( m2 ):** -

**A ENFANTS:** -

**de plante:** -

**MESSAGE** -



#### DESCRIPTION

**NEW BUILD RESIDENTIAL COMPLEX IN VILLAJOSYA** New Build residential complex of apartments and penthouses with 2 and 3 bedrooms, terraces, communal area with the pool. All apartments comes with parking space, some units with storage room included and others with optional storage room, Ceramic floor and wall tiles inside the house, and outside on terraces and communal areas. Reinforced security entrance door, interior doors and built-in wardrobes. double glazing with thermal bridge break. Fully equipped bathrooms and/or toilets; integrated wc, furniture, taps, shower tray, glass screen and mirror. Pre-installation of ducted hot/cold air conditioning. Homes qualified with high energy efficiency extraction installation. Complex located 900 metres from the sea, 950 metres from the shopping centre. 1.5 km from the old town of Villajoyosa, 15 minutes from Benidorm and 35 minutes from Alicante airport Villajoyosa is history, nature and sea. Each of the civilisations that have passed through this land; Egyptian artefacts brought by the

Phoenicians, an Iberian sanctuary, the largest Roman ship excavated in the Mediterranean. A history that has always been influenced by the sea. All along the 12 kilometres of coastline of this fishing village on the Costa Blanca. Villajoyosa is also known for its delicious Valor chocolate factory museum.



VIEW

- Panoramico

## PROPERTY GALLERY















Cuadro de Superficies:		D3	
Superficie Útil - RECIBIDOR	2,40	m2	
Superficie Útil - SALÓN-COMEDOR-COCINA	22,00	m2	
Superficie Útil - LAVADERO	3,15	m2	
Superficie Útil - PASO	2,10	m2	
Superficie Útil - BAÑO	4,16	m2	
Superficie Útil - DORMITORIO-1	8,57	m2	
Superficie Útil - DORMITORIO-2	11,53	m2	

Superficie - TERRAZA CUBIERTA	6,30	m2
Superficie Total Construida	66,78	m2
Superficie Total Construida, incluida comunes	76,22	m2

BLOQUE 3

Escalera 2 - Planta 3ª - Tipología D

E:1/100

















**"OUR EXPERIENCE IS YOUR GUARANTEE"**