



REF: # 11716

CALPE/MORAIRA



#### INFO

<b>PRIX:</b>	290.000 €
<b>TYPE:</b>	Appartement
<b>CITY:</b>	Calpe/Moraira
<b>CHAMBRES:</b>	2
<b>Ba ENFANTS:</b>	2
<b>Built ( m2 ):</b>	59
<b>pas ( m2 ):</b>	-
<b>Terrasse ( m2 ):</b>	-
<b>A ENFANTS:</b>	-
<b>de plante:</b>	-
<b>MESSAGE</b>	-



#### DESCRIPTION

NEW BUILD APARTMENTS IN CALPE New Build residential complex of

aprtments in Calpe. Modern apartments with 2 and 3 bedrooms, 2 bathrooms, open plan kitchen with living room, fitted wardrobes and terraces. Some of the properties have sea views. The common areas have a swimming pool for adults and children, a children's play area. Each apartment has a parking space and storage room in the basement. Calpe, one of the towns of La Marina Alta, lies on the northern coast of the province of Alicante, surrounded by the towns of Altea, Benidorm, Teulada-Moraira, Benissa. Calpe has a wonderful mixture of old Valencian culture and modern tourist facilities. It is a great base from which to explore the local area or enjoy the many local beaches. Calpe alone has three of the most beautiful sandy beaches on the coast. Calpe also has two Sailing Clubs: Real Club Náutico de Calpe and Club Náutico de Puerto Blanco. Fishing village of Calpe now transformed into a tourist magnet, the town sits in an ideal location, easily accessed by the A7 motorway and the N332 that runs from Valencia to Alicante; its approximately 1 hour drive from the airport at Alicante and 1,5 hours to Valencias airport.

## CERTIFICAT ÉNERGÉTIQUE



VIEW

- Panoramico

















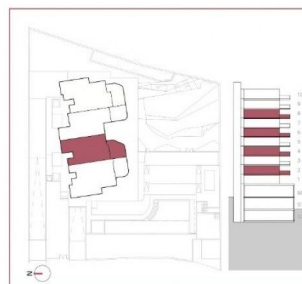
# TIPO TYPE

Plantas  
Floors | 2-4-6-8

F



APART. TIPO / TYPE F	sup útil (m <sup>2</sup> ) floor area (m <sup>2</sup> )	sup const. (m <sup>2</sup> ) built area (m <sup>2</sup> )
1 Vestibulo / Hall	1.22	
2 Salón comedor cocina / Living dining kitchen	27.06	
3 Galería / Gallery	2.39	
4 Distribuidor / Hall	10.57	
5 Dormitorio 1 / Bedroom 1	9.05	
6 Dormitorio 2 / Bedroom 2	1.28	
7 Baño 1 / Bathroom 1	3.57	
8 Baño 2 / Bathroom 2	4.05	
<b>Total superficie útil / Total floor area</b>	<b>59.29</b>	
9 Terraza cubierta / Covered terrace		7.43
10 Terraza no cubierta / Not Covered terrace		9.07
<b>Total sup. construida / Total built area</b>		<b>16.50</b>
SUP. CONST. CON PP ZONAS COMUNES TOTAL BUILT AREA WITH PP COMMON AREAS		<b>172.90</b>



Escala gráfica



## PLANTAS FLOORS

Cota  
Level | 2/ +54.65 m  
4/ +60.95 m  
6/ +67.25 m  
8/ +73.55 m

2  
4  
6  
8



Escala gráfica















***"OUR EXPERIENCE IS YOUR GUARANTEE"***