



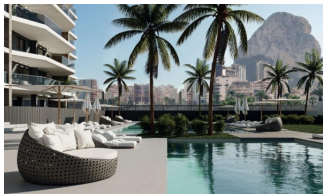
REF: # 11463

CALPE/MORAIRA



INFO

PRIX:	774.000 €
TYPE:	
CITY:	Calpe/Moraira
CHAMBRES:	3
Ba ENFANTS:	2
Built (m2):	98
pas (m2):	-
Terrasse (m2):	-
A ENFANTS:	-
de plante:	-
MESSAGE	-



DESCRIPTION

NEW BUILD APARTMENTS IN CALPE New Build residential complex of 2 and 3 bedrooms apartments with large terraces in Calpe. Two towers of 12 floors with beautiful apartments with views of the sea and the salt lake of Calpe. A light-filled house, in harmony with nature, with an open plan kitchen with living room, fitted wardrobes, spacious terraces and sea views. Each apartment has underground parking space. Large common area with 2 large swimming pools, one of them with a beach-type entrance, Sun lounge area with artificial grass, Children's play area, Paddle tennis court, Bicycle parking area, Garden areas. Calpe enjoys a privileged microclimate while the residential located just 200 metres from El Arenal Beach. An ideal spot to revel in the peace, quiet and blue of the sea. With your loved ones, check out everything it has to offer: underwater activities where you can discover the Mediterranean's flora and fauna while practising all kinds of water sports at international schools. Calpe, one of the towns of La Marina Alta, lies on the northern

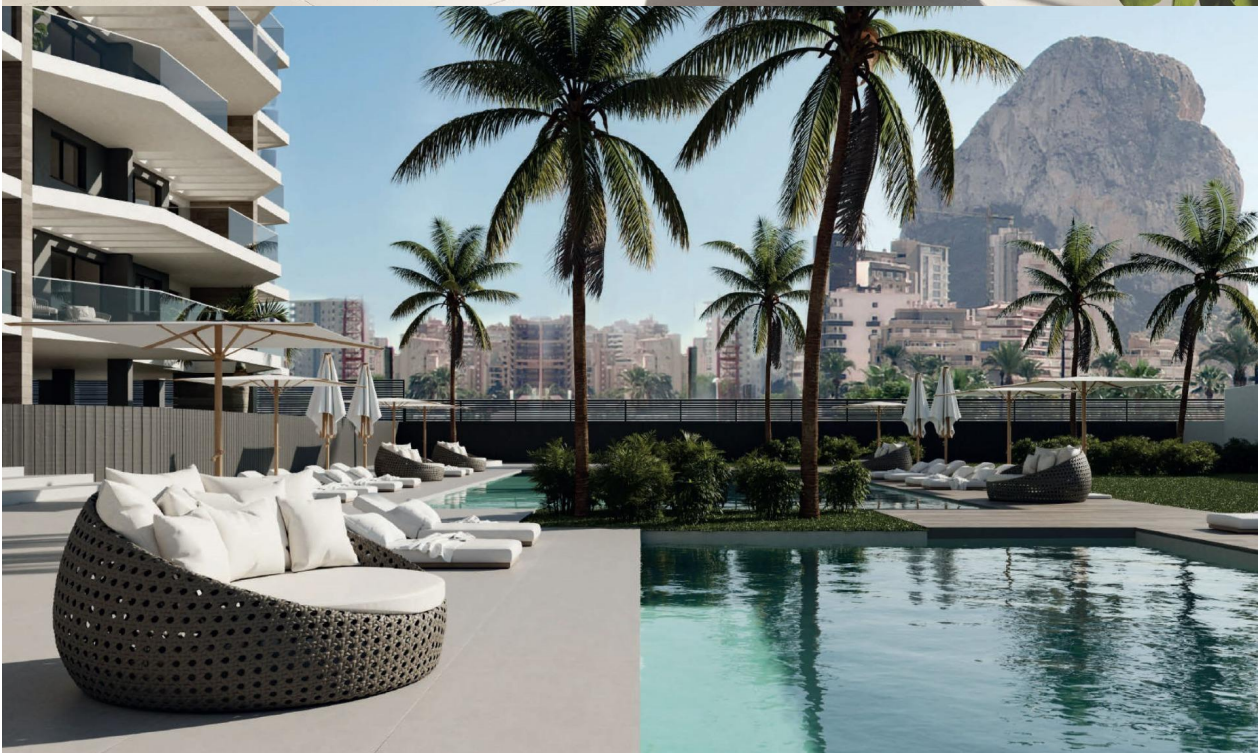
coast of the province of Alicante, surrounded by the towns of Altea, Benidorm, Teulada-Moraira, Benissa. Calpe has a wonderful mixture of old Valencian culture and modern tourist facilities. It is a great base from which to explore the local area or enjoy the many local beaches. Calpe alone has three of the most beautiful sandy beaches on the coast. Calpe also has two Sailing Clubs: Real Club Náutico de Calpe and Club Náutico de Puerto Blanco. Fishing village of Calpe now transformed into a tourist magnet, the town sits in an ideal location, easily accessed by the A7 motorway and the N332 that runs from Valencia to Alicante; its approximately 1 hour drive from the airport at Alicante and 1,5 hours to Valencias airport.



VIEW

- Panoramico

PROPERTY GALLERY







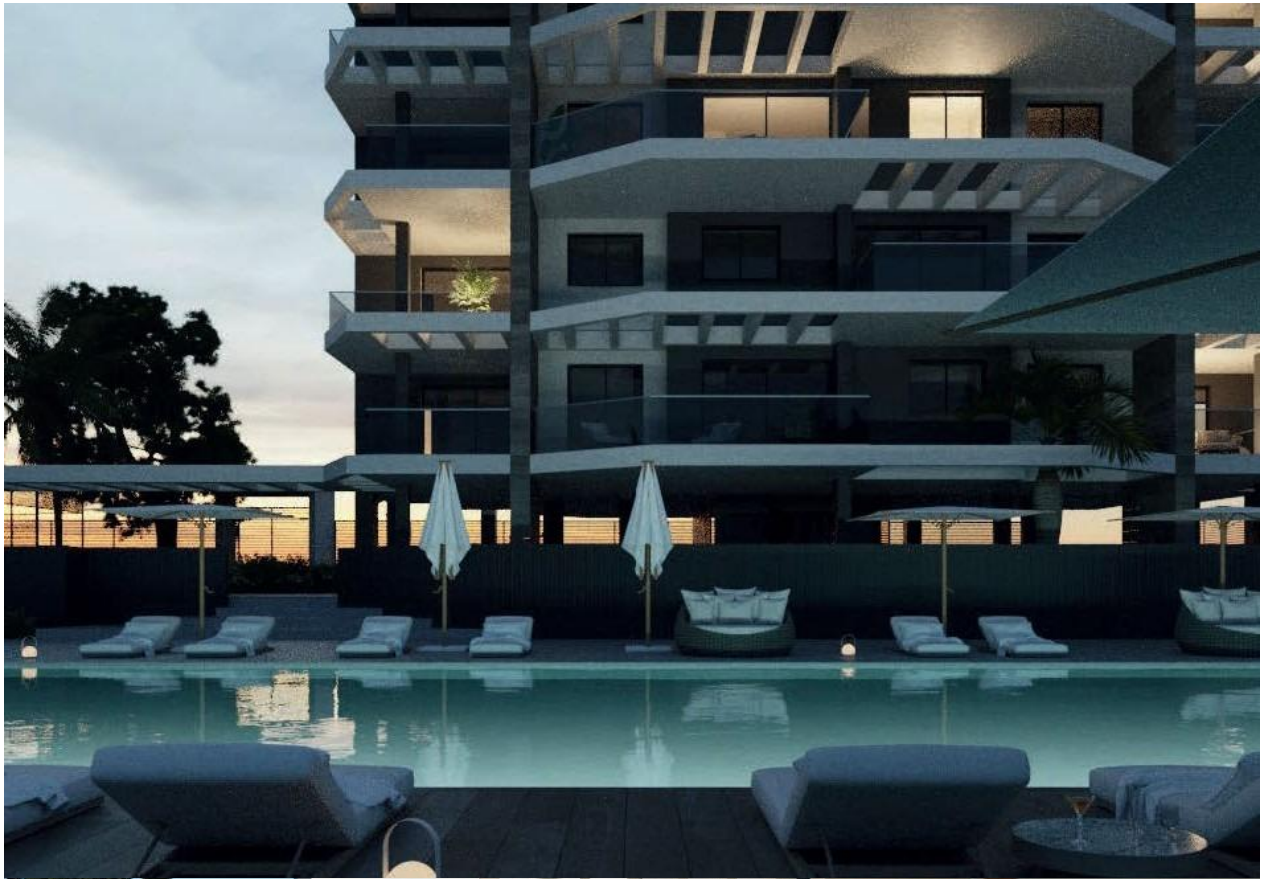


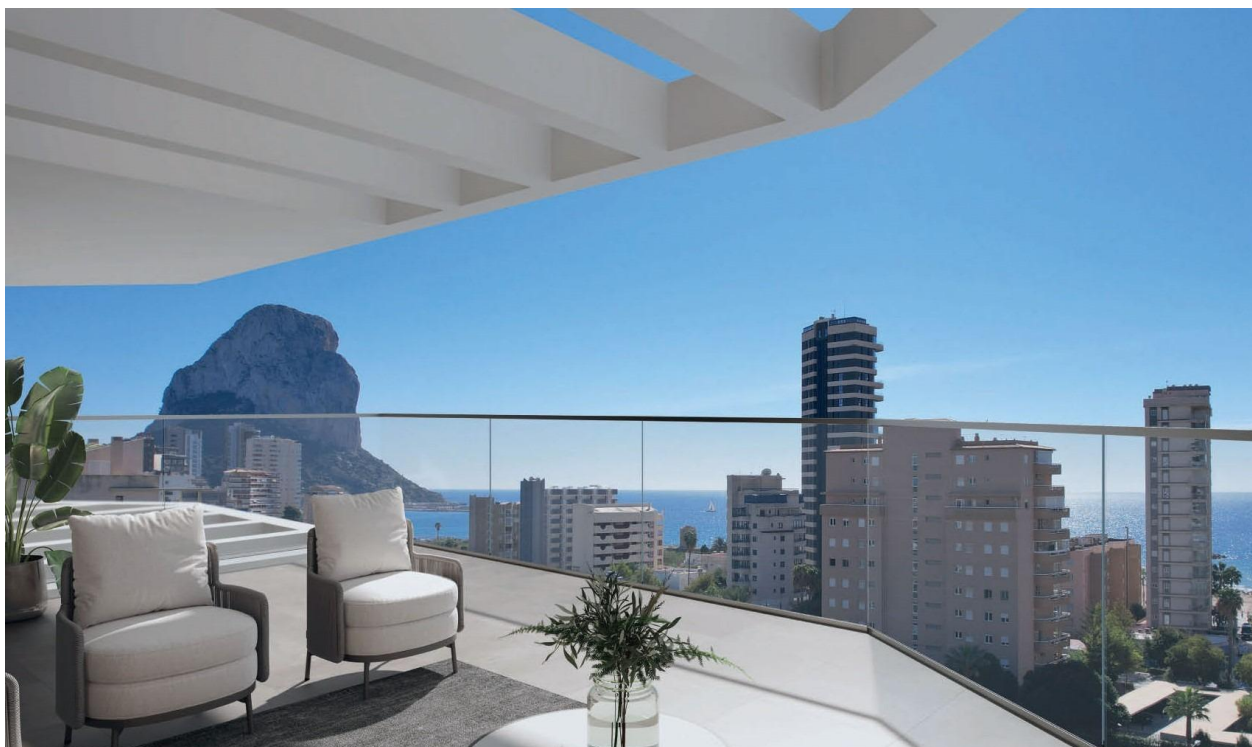












ÁTICO A impar

3 dormitorios



1. ESTAR-COMEDOR-COCINA	s.u. 45,25 m ²
2. PASO	s.u. 2,85 m ²
3. DORMITORIO 01	s.u. 11,60 m ²
4. DORMITORIO 02	s.u. 9,20 m ²
5. DORMITORIO 03	s.u. 8,60 m ²
6. BAÑO 01	s.u. 3,35 m ²
7. BAÑO 02	s.u. 4,85 m ²

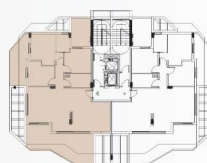
Total Superficie util interior 85,70 m²

TERRAZA 1	s.u. 26,45 m ²
TERRAZA 2	s.u. 11,95 m ²
TERRAZA 3	s.u. 8,35 m ²

Total Superficie util terrazas 46,75 m²

Sup. construida apto.	s.u. 98,40 m ²
Sup. terrazas	s.u. 46,75 m ²

TOTAL CONSTRUIDA 145,15 m²









"OUR EXPERIENCE IS YOUR GUARANTEE"