



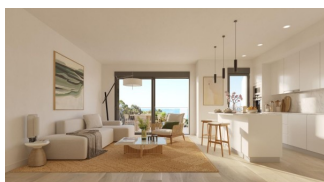
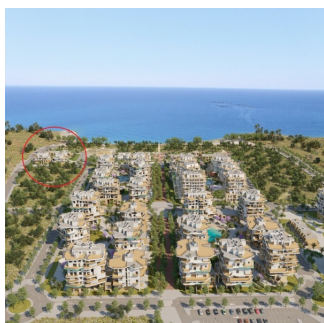
REF: # 11279

BENIDORM



#### INFO

PRIX:	923.000 €
TYPE:	Appartement
CITY:	Benidorm
CHAMBRES:	3
Ba ENFANTS:	3
Built ( m2 ):	138
pas ( m2 ):	-
Terrasse ( m2 ):	-
A ENFANTS:	-
de plante:	-
MESSAGE	-



#### DESCRIPTION

**NEW BUILD SEAFRONT RESIDENTIAL COMPLEX IN VILLAYOJOSA**  
New Build seafront private urbanization of 25 apartments and penthouses in Villajoyosa. Luxury properties with 2 and 3-bedrooms designed down to the smallest detail. Just 50 meters from the sea, with spacious terraces are perfect for relaxing and enjoying the sea views. Located on the beachfront, next to the Roman tower of Hercules, in a natural environment, this promotion has a swimming pool, gardens, children's area, equipped gym, sauna and steam bath. Ground floor properties with 2 bedrooms and 2 bathrooms with terraces and private gardens. Apartments with 2 bedrooms and 2 bathrooms with large terraces where you have a covered area and an open area. Penthouses with 3 bedrooms and 3 bathrooms with terraces and private solariums. All properties has private parking space. Villajoyosa is a hidden pearl on the Spanish Costa Blanca. This colourful fishing village is located between Benidorm and El Campello, about 30 minutes by car from

Alicante airport. In recent years, the idyllic town has become a sought-after location for second-home residents and tourists. Villajoyosa has a lot to offer, from the wide sandy beach to the narrow and colourful streets of the historic town centre. Today, more than thirty thousand people live in Villajoyosa and, above all, the colourful houses offer tons of inspiration for the many artists. Villajoyosa is also known for its delicious Valor chocolate factory museum.



VIEW

- Panoramico















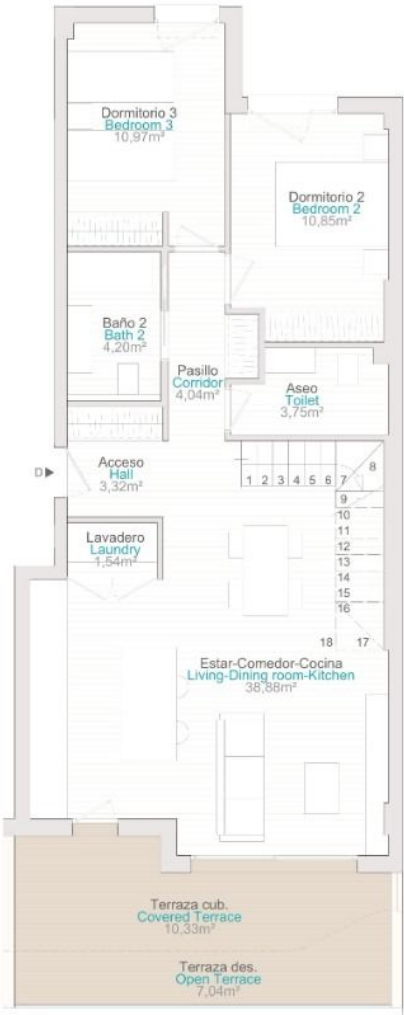
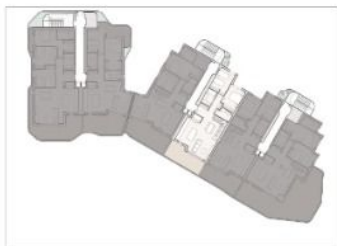




PLANTA 3 | Floor 3

ESC. 2 | PLANTA 3 | PUERTA D  
Staircase 2 | Floor 3 | Door D

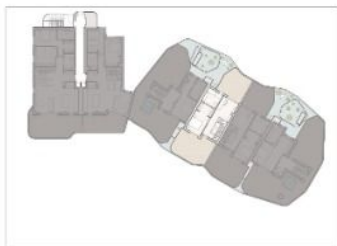
SUPERFICIE ÚTIL Usable Area	112,55m <sup>2</sup>
SUPERFICIE TERRAZAS Terrace Area	64,44m <sup>2</sup>
SUPERFICIE CONSTRUIDA /Incl. terrazas/ Built Area /Incl. terrace/	203,43m <sup>2</sup>



Zona común no transitable | Impassable communal area

ESC. 2 | PLANTA 3 | PUERTA D  
Staircase 2 | Floor 3 | Door D

SUPERFICIE ÚTIL Usable Area	112,55m <sup>2</sup>
SUPERFICIE TERRAZAS Terrace Area	64,44m <sup>2</sup>
SUPERFICIE CONSTRUIDA /Incl. terrazas/ Built Area /Incl. terrace/	203,43m <sup>2</sup>



Zona común no transitable | Impassable communal area















***"OUR EXPERIENCE IS YOUR GUARANTEE"***