



REF: # 11274

ALTEA



INFO

PRIX: 1.908.000 €

TYPE: Villa

CITY: Altea

CHAMBRES: 4

Ba ENFANTS: 6

Built (m2): 505

pas (m2): 957

Terrasse (m2): -

A ENFANTS: -

de plante: -

MESSAGE -



DESCRIPTION

NEW BUILD LUXURY VILLA IN ALTEA New Build Luxury Villa located in one of the most desirable areas of Altea, combining cutting-edge technology, comfortable interiors, energy efficiency and materials that enhance light and space. The property, with 360° views of the sea and the Benidorm skyline, is located in a privileged area of Altea la Vella, one of the most emblematic enclaves of the Costa Blanca North. The architecture, with its modern and functional lines, is designed to allow the spaces to breathe and open up to the large terrace and swimming pool. Light, air, sea and vegetation make it clear that the style adapts to the landscape and integrates with it. It is built on three levels, access is via the highest level, which houses the garage and the hall of the house, equipped with a lift, so that movement between levels is comfortable. The middle floor houses three bedrooms, all with en-suite bathrooms and access to a terrace to enjoy the sea from every room of the house. On the main floor is the fourth bedroom of this villa, also with direct access to the terrace and the entire day area, a large open plan living room connected to the kitchen, the terrace and the swimming pool. This villa is much more than a magnificent property next to the Mediterranean, it is an efficient villa equipped with heating, air conditioning and hot water

system by Aerotermia, installation of photovoltaic panels, electric car charging point and home automation system to be always connected to your home. The outdoor spaces, built on different levels, allow stone and native plants to play their decorative role, while integrating perfectly with the surroundings. Altea is one of the most charming villages on the Costa Blanca. It also holds the official title of Cultural Capital of the Valencian Community. Altea has a privileged location with both sea and beach, as well as mountain and river. Altea has more than 8 km of coastline, alternating cliffs and small coves with stretches of beach on flat terrain. Alicante airport located 50 minutes drive away and Valenciass airport is 1,5 hour drive away.



VIEW

- Panoramico

**JARD RIVIÈRE ET
TERRASSES N**

- Jard RIVER n privée



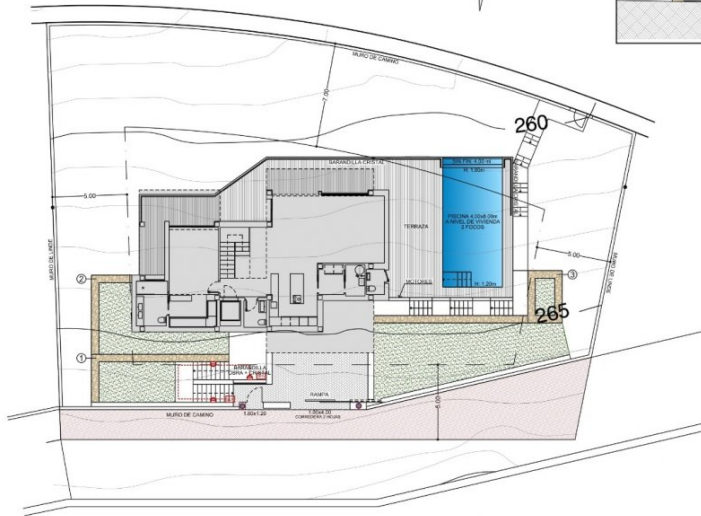
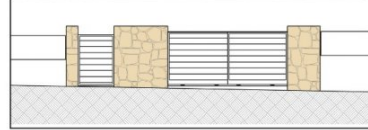




Escala Gráfica 0 5 10 15 20m



DETALLE ENTRADA PARCELA E:1/100



SERVIDUMBRE DE PASO. 94.41 m²

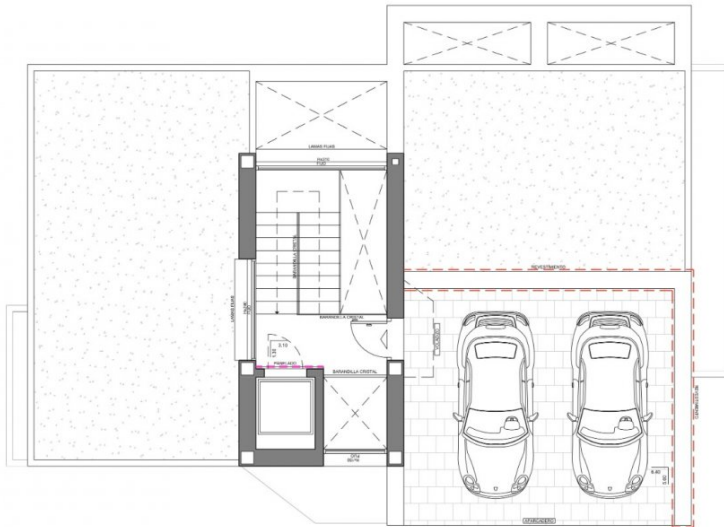
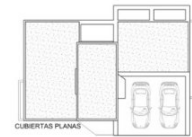
PUNTO DE LUZ

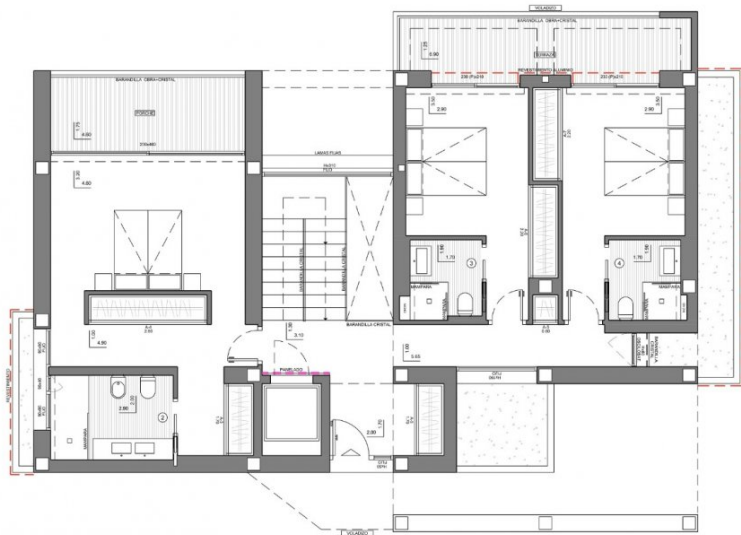
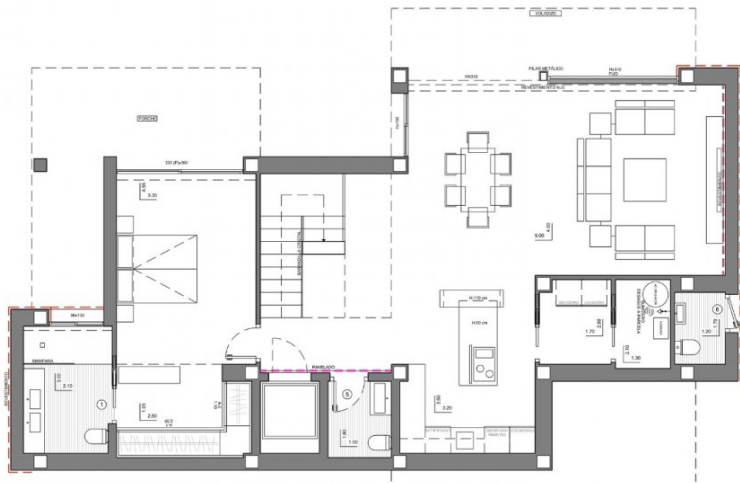
BALIZA PARED EXTERIOR

DETECTOR DE PRESENCIA

RELLENO

Escala Gráfica 0 5 10 15 20m









"OUR EXPERIENCE IS YOUR GUARANTEE"