



REF: # 11260

FINESTRAT



#### INFO

PRIX:	420.000 €
TYPE:	Appartement
CITY:	Finestrat
CHAMBRES:	2
Ba ENFANTS:	2
Built ( m2 ):	166
pas ( m2 ):	55
Terrasse ( m2 ):	-
A ENFANTS:	-
de plante:	-
MESSAGE	-



#### DESCRIPTION

**NEW BUILD RESIDENTIAL COMPLEX IN FINESTRAT WITH THE SEA VIEWS** New Build luxury residential complex in Finestrat. Complex consists of duplexes, apartments, penthouses and independent villas. The complex consists of 3 blocks: 2 blocks of 7 floors and 1 of 5. Individual villas with private swimming pool. Beautiful ground floor apartments with 2 and 3 bedrooms, 2 bathrooms, open plan kitchen with the lounge area, fitted wardrobes, basement and private garden. Each property comes with underground parking space and storeroom. Closed luxury complex with communal areas, sea and Benidorm skyline views located few kilometres from the bustling beach life, shopping centre and sandy beaches. The delivery of the complex is April 2025. The complex consist: Community swimming pool 200 m<sup>2</sup> Heated indoor swimming pool Playground Sports area Padel Underground parking Storage room Elevator Finestrat located in the Marina Baixa region of the Costa Blanca, close to neighbouring Benidorm and about 40 kilometres from the city of Alicante and the international airport. The village is situated on the mountainside of Puig Campana and offers beautiful views of the mountains, the coast and the Mediterranean Sea. Benidorm is just a five-minute drive from the properties and offers all the services you would

need including shops, bars, restaurants, supermarkets, banks, pharmacies and several private international schools. Close to the beaches of Levante, Poniente and Cala de Finestrat, with more than 6km in length that are among the best in Europe awarded by the European Union with Blue Flags. All leisure services such as the theme parks of Aqua Natura, Terra Mítica, Terra Natura, Aqualandia and Mundomar, Sierra Cortina and Villaitana Golf courses, hiking and climbing in Puig Campana an incomparable natural setting or enjoy of nautical sports.



## VIEW

- Panoramico

## JARD RIVIÈRE ET TERRASSES N

- Jard RIVER n privée



## PROPERTY GALLERY



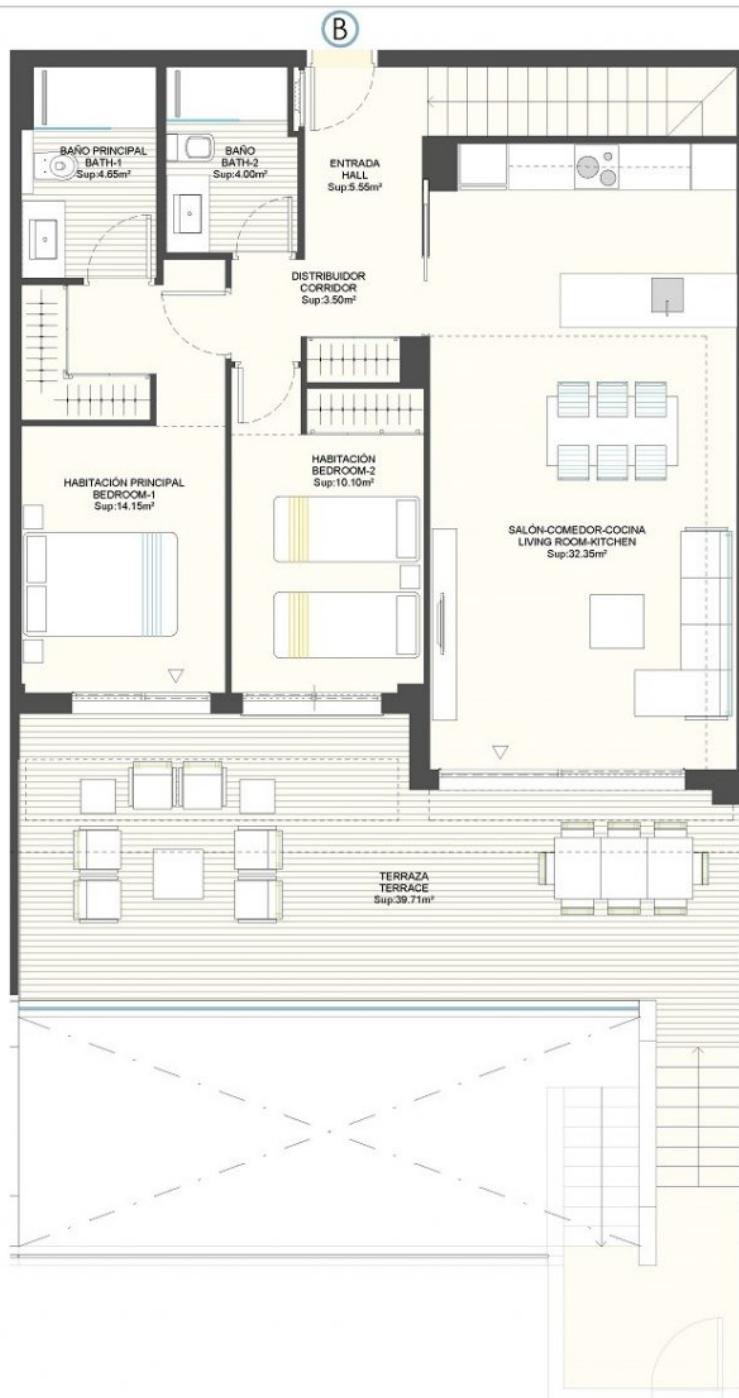












Bloque  
**3**

Planta  
**0**

Vivienda  
**B**



**TOTAL SUP. ÚTIL / LIVING AREA:**

Sup.útil vivienda / Property:

Sup.útil planta sótano / basement:

Sup.útil terrazas y patios cubiertos / terrace\_covered:

Sup.útil terrazas y patios descubiertos / terrace\_uncovered:

**TOTAL SUP. CONSTRUIDA C.T / BUILD AREA t.i :**

261.81 m².

74.30 m².

92.55 m².

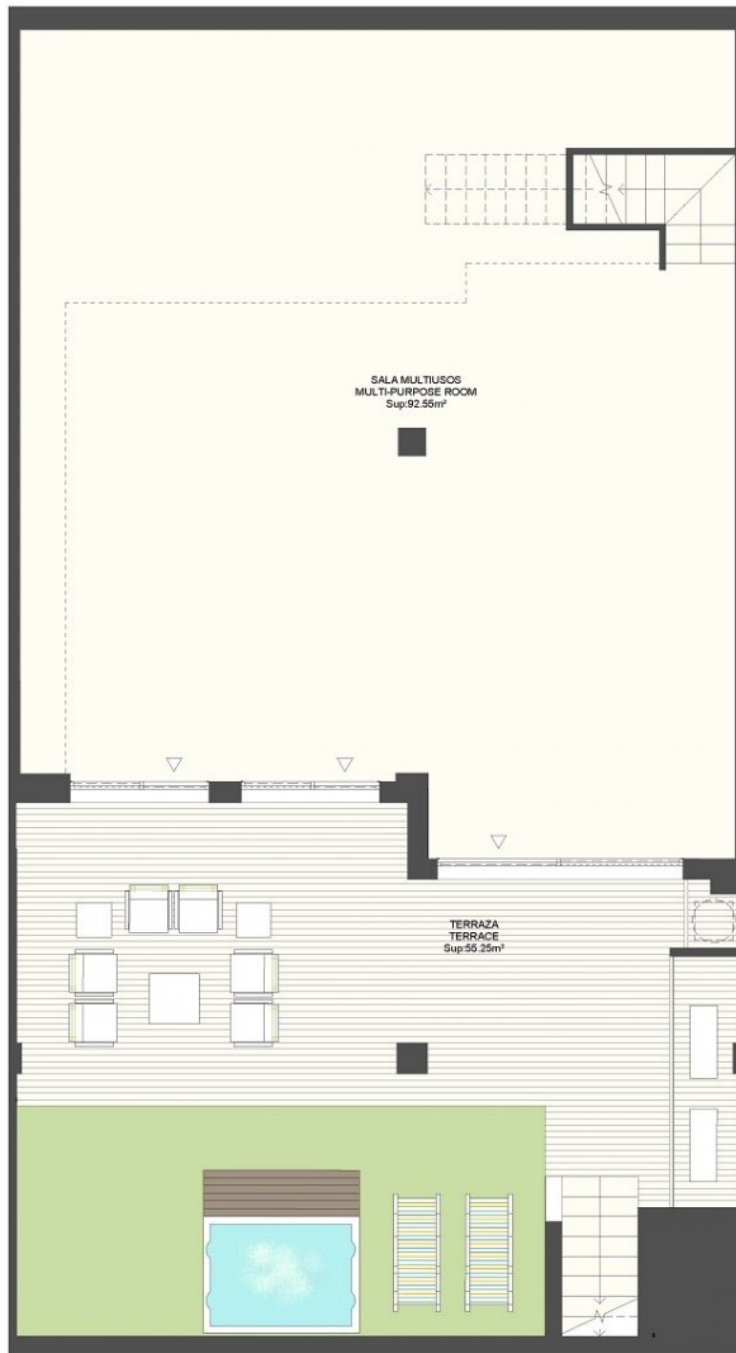
35.46 m².

59.50 m².

302.74 m².







Bloque  
**3**

Planta  
**0**

Vivienda  
**B**



**TOTAL SUP. ÚTIL / LIVING AREA:**

Sup.útil vivienda / Property:

Sup.útil planta sótano / basement:

Sup.útil terrazas y patios cubiertos / terrace\_covered:

Sup.útil terrazas y patios descubiertos / terrace\_uncovered:

**TOTAL SUP. CONSTRUIDA C.T / BUILD AREA t.i :**

261.81 m².

74.30 m².

92.55 m².

35.46 m².

59.50 m².

302.74 m².













***"OUR EXPERIENCE IS YOUR GUARANTEE"***