



REF: # 11164

FINESTRAT



#### INFO

**PRIX:** 359.900 €

**TYPE:** Maison

**CITY:** Finestrat

**CHAMBRES:** 3

**Ba ENFANTS:** 2

**Built ( m2 ):** 86

**pas ( m2 ):** -

**Terrasse ( m2 ):** -

**A ENFANTS:** -

**de plante:** -

**MESSAGE** -



#### DESCRIPTION

**RESIDENTIAL COMPLEX OF NEW CONSTRUCTION IN FINESTRAT**  
New construction residential complex in Finestrat located in one of the best areas to live on the Costa Blanca. The new construction complex consists of 60 bungalows with 2 or 3 bedrooms and 2 bathrooms with access to the common areas and the pool. Some units also have a private pool. All bungalows have a parking space. Some units have magnificent views of the sea and the Benidorm skyline. Finestrat is located in the Marina Baixa region of the Costa Blanca, close to neighboring Benidorm and about 40 kilometers from the city of Alicante and the international airport. Benidorm is only a five minute drive from the properties and offers all the services you may need, including shops, bars, restaurants, supermarkets, banks, pharmacies and several international private schools. Near the beaches of Levante, Poniente and Cala de Finestrat, with more than 6 km in length that are among the best in Europe awarded by the European Union with Blue Flags. All the leisure services such as the Aqua Natura, Terra Mítica, Terra Natura, Aqualandia and Mundomar theme parks, the Sierra Cortina and

Villaitana golf courses, hiking and climbing in Puig Campana an incomparable natural setting or the enjoyment of water sports.



VIEW

- Panoramico



















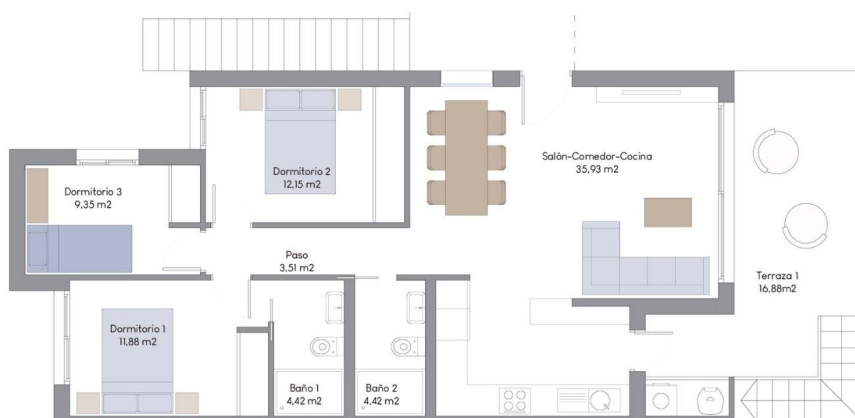






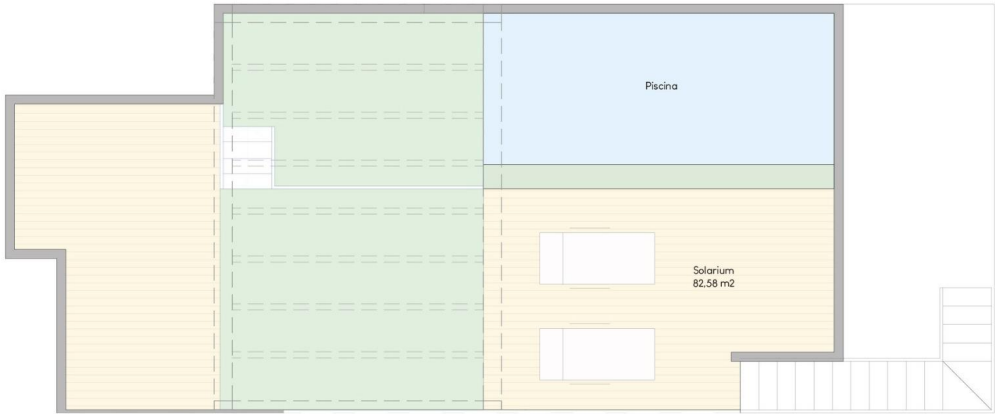
PLANTA PRIMERA

VIVIENDA n° - 58



SUPERFICIES	
Planta Primera	86.16 m²
Terraza 1	16.88 m²
Solarium	82.58 m²
Total	185.62 m²

LAS DIMENSIONES Y LAS SUPERFICIES QUE APARECEN EN ESTE DOCUMENTO SON APROXIMADAS Y PODRÁN SER OBJETO DE MODIFICACIÓN DURANTE LA REDACCIÓN DE LOS PROYECTOS BÁSICO Y DE EJECUCIÓN



SUPERFICIES	
Planta Primera	86,16 m2
Terraza I	16,88 m2
Solarium	82,58 m2
Total	185,62 m2

LAS DIMENSIONES Y LAS SUPERFICIES QUE APARECEN EN ESTE DOCUMENTO SON APROXIMADAS Y PODRÁN SER OBJETO DE MODIFICACIÓN DURANTE LA REDACCIÓN DE LOS PROYECTOS BÁSICO Y DE EJECUCIÓN

**"OUR EXPERIENCE IS YOUR GUARANTEE"**