



REF: # 11072

QUESADA-ROJALES (LA FINCA GOLF)



INFO

PRIX: 600.000 €

TYPE: Villa

CITY: Quesada-Rojales (La Finca Golf)

CHAMBRES: 3

Ba ENFANTS: 2

Built (m2): 122

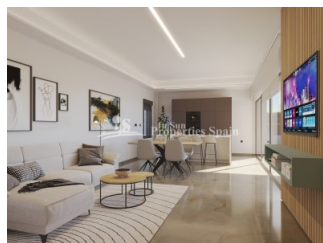
pas (m2): 479

Terrasse (m2): 171

A ENFANTS:

de plante: 1

MESSAGE -



DESCRIPTION

BEAUTIFUL NEW BUILD VILLAS IN LA FINCA GOLF RESORT, ALGORFA These wonderful 122m2 Villas are built on a large plot of 479m2 over 1 floor and consists of 3 bedrooms, 2 bathrooms, open plan kitchen, the living room with open views to the 38m2 terrace, 133m2 solarium, private garden with the pool and parking. La Finca is set in Algorfa, a town known as a peaceful and quiet place where people go to have a relaxing holiday and to recharge. Situated in the Vega Baja countryside which is famous for its orange and lemon orchards, the majestic Mount Escotera hovers in the background. Sitting by the banks of the Segura River, Algorfa's location offers fantastic views of the region. This lovely Spanish town has several shops, Spanish tapas bars and restaurants. Just outside the town is a famous 19th century neo-gothic church. The town plaza is only a 15 min walk from La Finca. The beautiful beaches of Guardamar are only 15-minute drive away, La Marquesa Golf course and many other just a 20-minute drive away; Las Colinas Golf and Country Club, Vistabella Golf, Villamartin and Las

Ramblas. There are shopping centers nearby, the Habaneras in Torrevieja and only 20 minutes' drive "La Zenia Boulevard" the largest shopping Centre in the Alicante region with over 150 shops! To the airports, La Finca is 30km from Alicante and 35km from Corvera Murcia. Other large cities like Alicante, Murcia, Cartagena, and Elche can be reached using the motorway AP7.



STYLE <ul style="list-style-type: none">• moderne• contemporain	VIEW <ul style="list-style-type: none">• Panoramico	CLIMATISATION <ul style="list-style-type: none">• Central	DISTANCE : <div>Beach : +10 Km</div> <div>aéroport: 50 Km</div> <div>: 5 Km</div>
MEUBLÉ <ul style="list-style-type: none">• Vide	PARKING PAS. CAR <div>: 1</div>	ÉTAGE <ul style="list-style-type: none">• tuiles• Stone	CUISINE <ul style="list-style-type: none">• cuisine
JARD RIVIÈRE ET TERRASSES N <ul style="list-style-type: none">• Terrasse ouverte• murs en pierre• Jard RIVER n privée	EXTRA <ul style="list-style-type: none">• intégré• Alarme• Porte de sécurité• Double vitrage		





















"OUR EXPERIENCE IS YOUR GUARANTEE"