



REF: # 11067

QUESADA-ROJALES (LA FINCA GOLF)



INFO

PRIX:	243.000 €
TYPE:	Appartement
CITY:	Quesada-Rojales (La Finca Golf)
CHAMBRES:	2
Ba ENFANTS:	2
Built (m2):	68
pas (m2):	-
Terrasse (m2):	71
A ENFANTS:	
de plante:	-
MESSAGE	-



DESCRIPTION

A NEW BUILD residential complex of independent or semi-detached villas and apartments with amazing communal pool and green areas in LA FINCA GOLF, ALGORFA. These sunny bungalow apartments are distributed in two blocks, each property has 2 and 3 bedrooms all with fitted wardrobes, 2 bathrooms, open plan kitchen with lounge area. The ground floor properties have a private garden whilst the top floor apartments have a private solarium. An optional underground parking space and storeroom is available at extra cost. The complex is situated in La Finca Golf resort, in the municipality of Algorfa, in the Vega Baja area of the Costa Blanca South. Only 15 minutes drive from the sandy beaches of Guardamar del Segura, and only 35 minutes from Alicante airport. The larger towns of Almoradi, Benijófar and Ciudad Quesada are a short drive away. Torrevieja and Orihuela Costa, both with large shopping centres are just 15 minutes drive away.

CERTIFICAT ÉNERGÉTIQUE



STYLE	VIEW	CLIMATISATION	DISTANCE :
<ul style="list-style-type: none">• moderne• contemporain	<ul style="list-style-type: none">• Panoramico	<ul style="list-style-type: none">• Central	Beach : +10 Km aéroport: 50 Km
ÉTAGE	CUISINE	JARD RIVIÈRE ET TERRASSES N	CHAUFFAGE
<ul style="list-style-type: none">• tuiles• Stone	<ul style="list-style-type: none">• cuisine	<ul style="list-style-type: none">• Terrasse ouverte• Jard RIVER Communauté	<ul style="list-style-type: none">• central au gaz
EXTRA			
<ul style="list-style-type: none">• intégré• Porte de sécurité• Double vitrage			





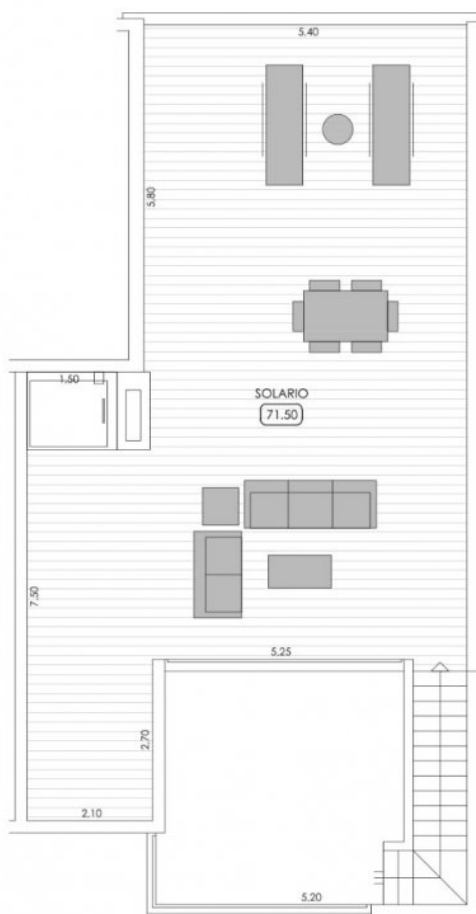








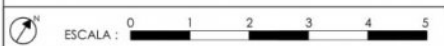




PLANTA 1-2

SUPERFICIE ÚTIL VIVIENDA	58.50
SUPERFICIE ÚTIL LAVADERO	3.55
SUPERFICIE ÚTIL TERRAZA	18.50
SUPERFICIE ÚTIL SOLARIO	71.50

SUPERFICIE CONSTRUIDA VIVIENDA	66.85
SUPERFICIE CONSTRUIDA EL.COMUNES	1.80
TOTAL SUPERFICIE CONSTRUIDA	68.65



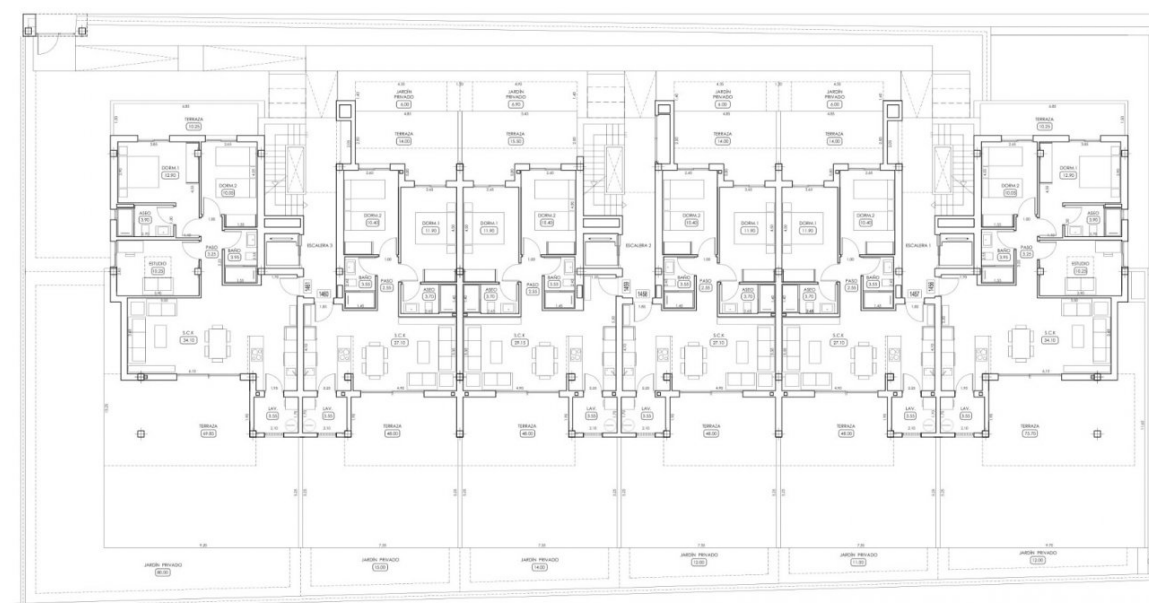
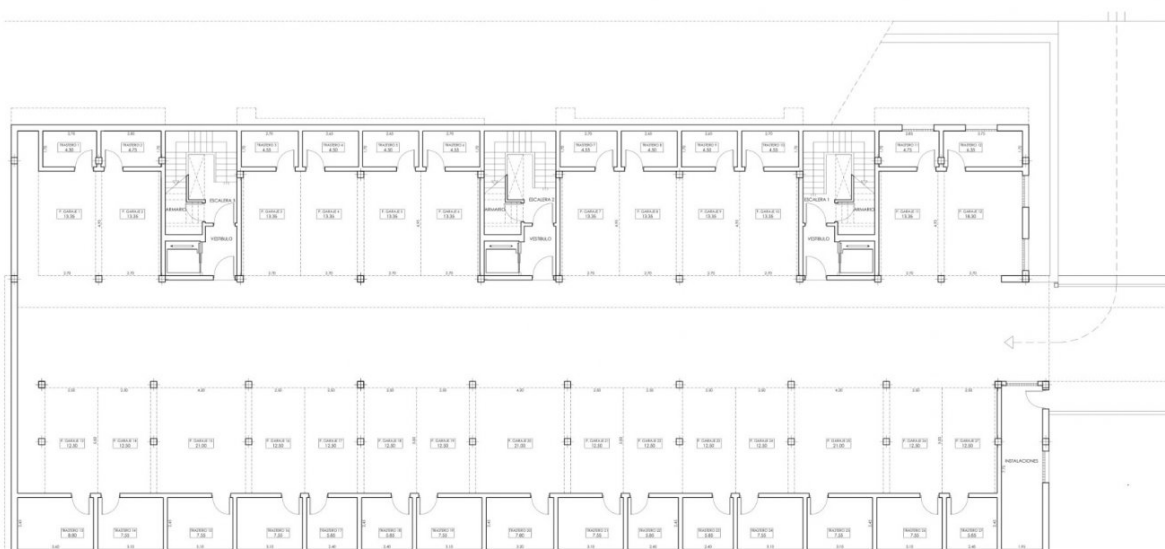


PLANTA 1-2

SUPERFICIE ÚTIL VIVIENDA	58.50
SUPERFICIE ÚTIL LAVADERO	3.55
SUPERFICIE ÚTIL TERRAZA	18.50
SUPERFICIE ÚTIL SOLARIO	71.50

SUPERFICIE CONSTRUIDA VIVIENDA	66.85
SUPERFICIE CONSTRUIDA EL.COMUNES	1.80
TOTAL SUPERFICIE CONSTRUIDA	68.65







DISTRIBUCIÓN.
PLANTA PRIMERA.

0 2 4 6 8 10



DISTRIBUCIÓN.
PLANTA CUBIERTAS.

0 2 4 6 8 10



"OUR EXPERIENCE IS YOUR GUARANTEE"