



REF: # 10821

COSTA MURCIA (SAN PEDRO DEL PINATAR)



#### INFO

<b>PRIX:</b>	199.000 €
<b>TYPE:</b>	Appartement
<b>CITY:</b>	Costa Murcia (San Pedro del Pinatar)
<b>CHAMBRES:</b>	2
<b>Ba ENFANTS:</b>	2
<b>Built ( m2 ):</b>	63
<b>pas ( m2 ):</b>	20
<b>Terrasse ( m2 ):</b>	13
<b>A ENFANTS:</b>	
<b>de plante:</b>	1
<b>MESSAGE</b>	-



#### DESCRIPTION

NEW BUILD GROUND FLOOR APARTMENT IN SAN PEDRO DEL PINATAR - with private garden and communal pool. This 63m2 ground floor apartment consists of 2 bedrooms, 2 bathrooms a private 13m2 terrace and 20m2 garden. All apartments have a parking space and the complex has a lovely communal pool with garden area. San Pedro del Pinatar's privileged location on the Mar Menor and Mediterranean coastline it attracts those with an interest in sailing and watersports, providing marina mooring and sailing clubs, while the beaches and natural mud baths attract those seeking safe sun, sea and sand. San Pedro del Pinatar has an established community and offers an excellent range of activities, including covered swimming pool and sports facilities, as well as a year round programme of social activities by the pleasant winter weather. The benefits of the mud baths, typical of the region, or the calm waters of the Mar Menor, have favoured the growth of Lo Pagán, which currently has all kind of amenities. In addition, it has an excellent location, just 5 minutes from the Commercial Centre Dos Mares. Murcia/Corvera airport is 30 minutes away and Alicante airport is

an hour drive away.



<b>STYLE</b> <ul style="list-style-type: none"><li>• moderne</li><li>• contemporain</li></ul>	<b>VIEW</b> <ul style="list-style-type: none"><li>• Panoramico</li></ul>	<b>CLIMATISATION</b> <ul style="list-style-type: none"><li>• Central</li></ul>	<b>DISTANCE :</b> aéroport: 40 Km
<b>MEUBLÉ</b> <ul style="list-style-type: none"><li>• Vide</li></ul>	<b>PARKING PAS. CAR</b> : 1	<b>ÉTAGE</b> <ul style="list-style-type: none"><li>• tuiles</li><li>• Stone</li></ul>	<b>CUISINE</b> <ul style="list-style-type: none"><li>• cuisine</li></ul>
<b>JARD RIVIÈRE ET TERRASSES N</b> <ul style="list-style-type: none"><li>• Terrasse ouverte</li><li>• Paysage</li><li>• Jard RIVER n privée</li><li>• Jard RIVER Communauté</li></ul>	<b>EXTRA</b> <ul style="list-style-type: none"><li>• intégré</li><li>• Porte de sécurité</li><li>• Double vitrage</li></ul>		









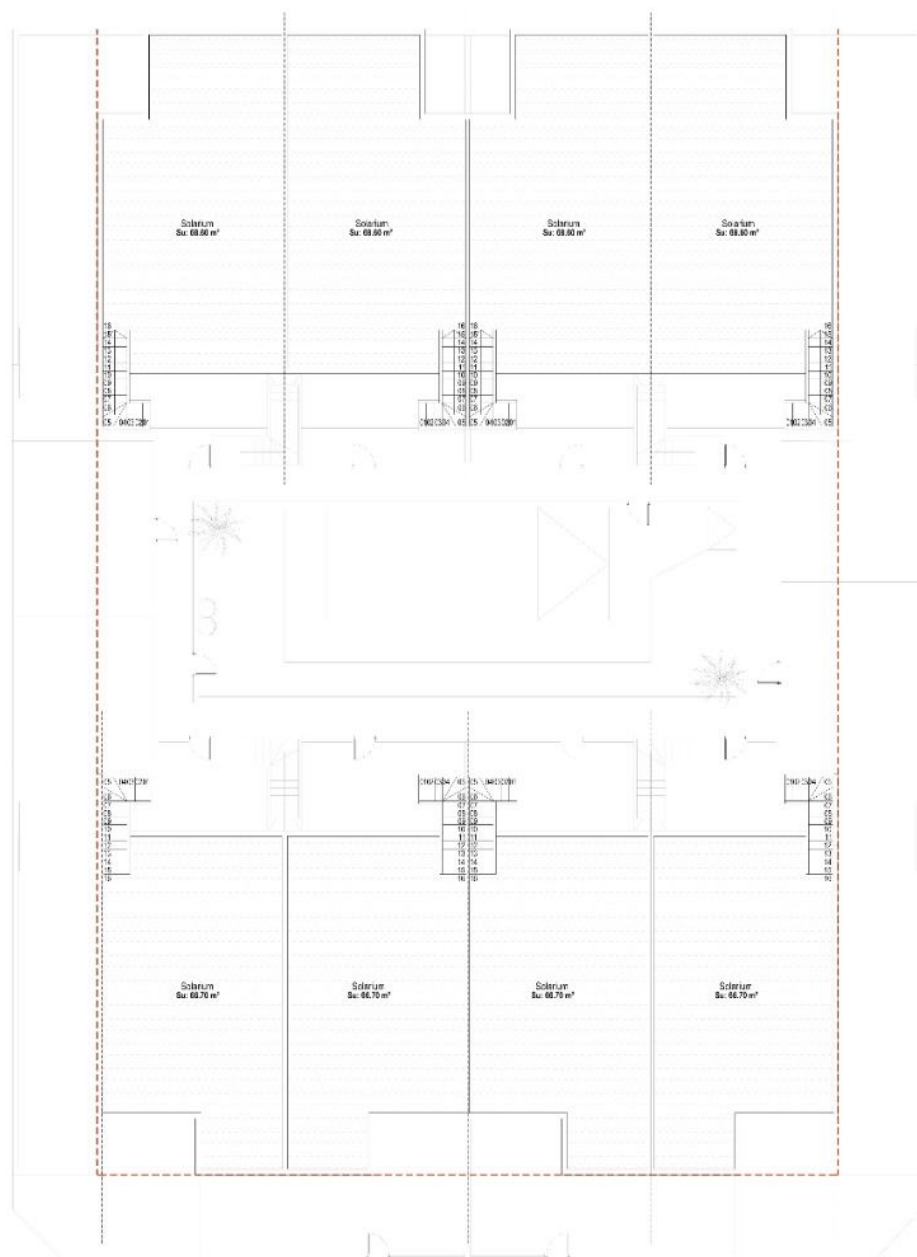








# SOLARIUM GENERAL

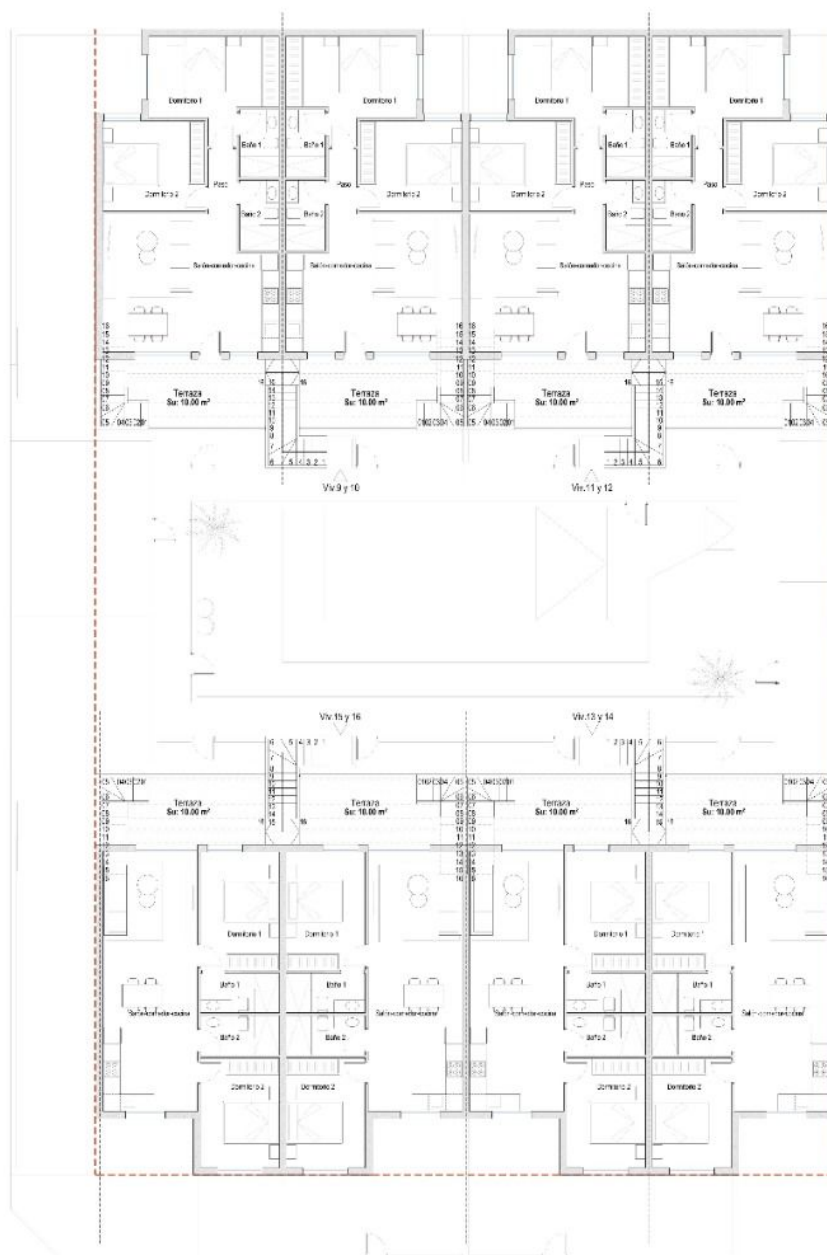


CUADRO DE SUPERFICIES

Vivienda	Plantas	Uso	S. Útil	S. Constr.
1 y 4	Baja	Vivienda	11.10 m²	10.00 m²
		Pasillo	0.20 m²	2.70 m²
		TOTAL	70.24 m²	96.37 m²
TOTAL X 2 viviendas			150.85 m²	172.24 m²
2 y 3	Baja	Vivienda	11.10 m²	7.10 m²
		Pasillo	0.20 m²	2.70 m²
		TOTAL	100.20 m²	140.87 m²
TOTAL X 2 viviendas			152.25 m²	169.54 m²
5 y 8	Baja	Vivienda	11.10 m²	11.10 m²
		Pasillo	0.20 m²	2.70 m²
		TOTAL	75.10 m²	94.20 m²
TOTAL X 2 viviendas			150.20 m²	169.50 m²
6 y 7	Baja	Vivienda	11.10 m²	11.10 m²
		Pasillo	0.20 m²	2.70 m²
		TOTAL	74.60 m²	92.77 m²
TOTAL X 2 viviendas			149.20 m²	185.54 m²

Vivienda	Plantas	Uso	S. Útil	S. Constr.		
9 y 12	Baja	Vivienda	11.10 m <sup>2</sup>	11.10 m <sup>2</sup>		
		Pasillo	0.20 m <sup>2</sup>	2.70 m <sup>2</sup>		
		TOTAL	63.10 m <sup>2</sup>	72.56 m <sup>2</sup>		
		TOTAL X 2 Viviendas		126.20 m <sup>2</sup>	145.10 m <sup>2</sup>	
10 y 11	Baja	Vivienda	11.10 m <sup>2</sup>	11.10 m <sup>2</sup>		
		Pasillo	0.20 m <sup>2</sup>	2.70 m <sup>2</sup>		
		TOTAL	63.10 m <sup>2</sup>	71.46 m <sup>2</sup>		
		TOTAL X 2 Viviendas		126.20 m <sup>2</sup>	142.90 m <sup>2</sup>	
13 y 16	Baja	Vivienda	11.10 m <sup>2</sup>	11.10 m <sup>2</sup>		
		Pasillo	0.20 m <sup>2</sup>	2.70 m <sup>2</sup>		
		TOTAL	61.40 m <sup>2</sup>	70.56 m <sup>2</sup>		
		TOTAL X 2 Viviendas		122.80 m <sup>2</sup>	141.00 m <sup>2</sup>	
14 y 15	Baja	Vivienda	11.10 m <sup>2</sup>	11.10 m <sup>2</sup>		
		Pasillo	0.20 m <sup>2</sup>	2.70 m <sup>2</sup>		
		TOTAL	61.40 m <sup>2</sup>	69.26 m <sup>2</sup>		
		TOTAL X 2 Viviendas		122.80 m <sup>2</sup>	138.56 m <sup>2</sup>	
					S. Útil	S. Constr.
		TOTAL			1.805.40 m <sup>2</sup>	1.241.52 m <sup>2</sup>

# PLANTA PRIMERA GENERAL

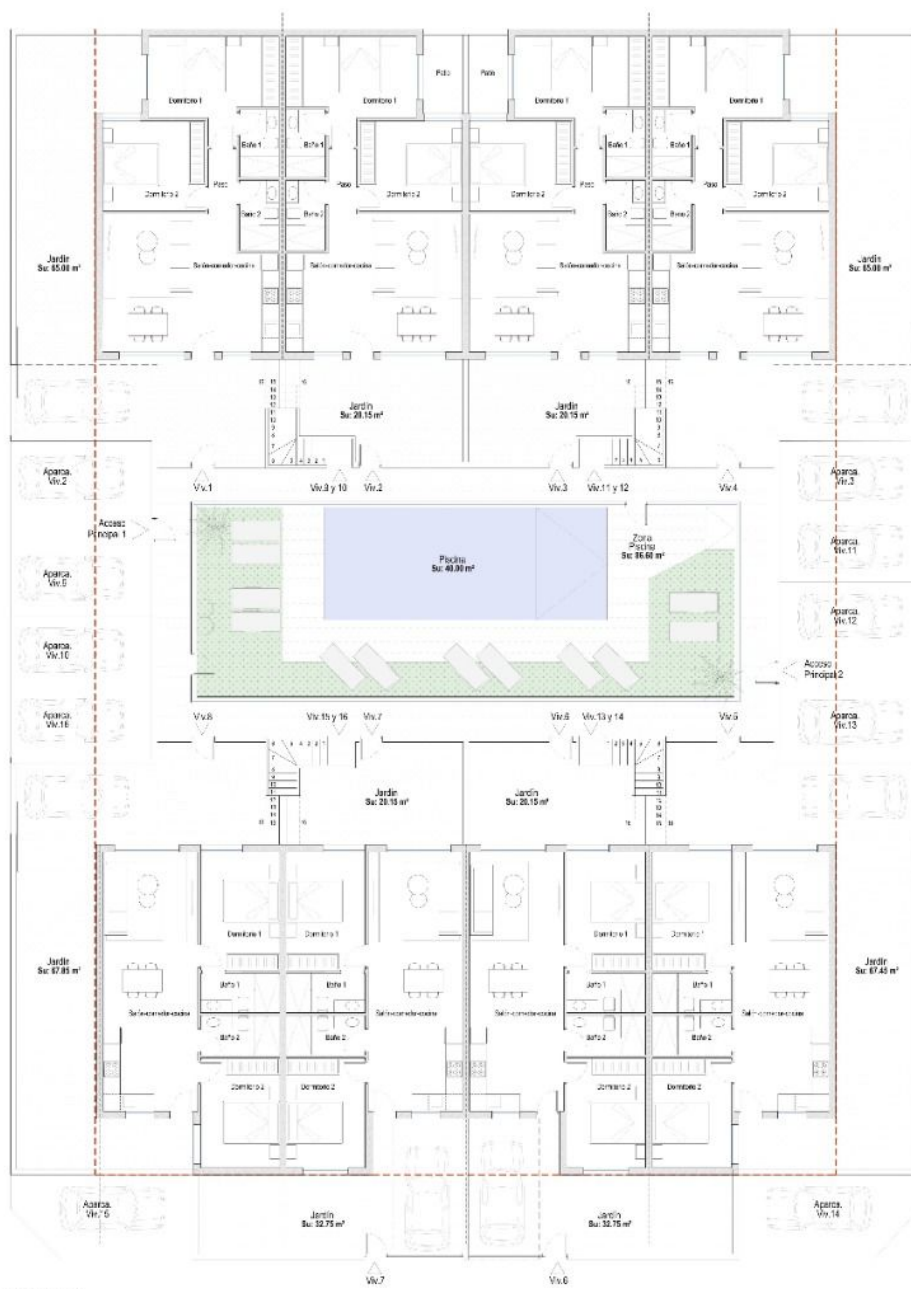


CUADRO DE SUPERFICIES

Vivienda	Partes	Uso	S. Útil	S. Const.
1 y 4	Baja	Vivienda	11.10 m <sup>2</sup>	10.00 m <sup>2</sup>
		Garaje	10.00 m <sup>2</sup>	2.00 m <sup>2</sup>
		TOTAL	21.10 m <sup>2</sup>	12.00 m <sup>2</sup>
2 y 3	Baja	Vivienda	13.10 m <sup>2</sup>	12.00 m <sup>2</sup>
		Garaje	10.00 m <sup>2</sup>	2.00 m <sup>2</sup>
		TOTAL	23.10 m <sup>2</sup>	14.00 m <sup>2</sup>
5 y 8	Baja	Vivienda	11.10 m <sup>2</sup>	10.00 m <sup>2</sup>
		Garaje	10.00 m <sup>2</sup>	2.00 m <sup>2</sup>
		TOTAL	21.10 m <sup>2</sup>	12.00 m <sup>2</sup>
6 y 7	Baja	Vivienda	11.10 m <sup>2</sup>	10.00 m <sup>2</sup>
		Garaje	10.00 m <sup>2</sup>	2.00 m <sup>2</sup>
		TOTAL	21.10 m <sup>2</sup>	12.00 m <sup>2</sup>

Vivienda	Partes	Uso	S. Útil	S. Const.
9 y 12	Baja	Vivienda	11.10 m <sup>2</sup>	10.00 m <sup>2</sup>
		Garaje	10.00 m <sup>2</sup>	2.00 m <sup>2</sup>
		TOTAL	21.10 m <sup>2</sup>	12.00 m <sup>2</sup>
10 y 11	Baja	Vivienda	11.10 m <sup>2</sup>	10.00 m <sup>2</sup>
		Garaje	10.00 m <sup>2</sup>	2.00 m <sup>2</sup>
		TOTAL	21.10 m <sup>2</sup>	12.00 m <sup>2</sup>
13 y 16	Baja	Vivienda	11.10 m <sup>2</sup>	10.00 m <sup>2</sup>
		Garaje	10.00 m <sup>2</sup>	2.00 m <sup>2</sup>
		TOTAL	21.10 m <sup>2</sup>	12.00 m <sup>2</sup>
14 y 15	Baja	Vivienda	11.10 m <sup>2</sup>	10.00 m <sup>2</sup>
		Garaje	10.00 m <sup>2</sup>	2.00 m <sup>2</sup>
		TOTAL	21.10 m <sup>2</sup>	12.00 m <sup>2</sup>

## PLANTA BAJA GENERAL



CUADRO DE SUPERFICIES

Vista	Plan	Obj.	S. 191	S. 200
1 y 4		10.000 10.000	10.000	10.000
	TOTAL		70,24 m2	56,37 m2
	ICTAL X 2 VENTANAS		153,85 m2	122,24 m2
2 y 3	Baja	10.000 10.000	10.000	10.000
	TOTAL		70,24 m2	56,37 m2
	ICTAL X 2 VENTANAS		153,85 m2	122,24 m2
5 y 8	Baja	10.000 10.000	10.000	10.000
	TOTAL		70,24 m2	56,37 m2
	ICTAL X 2 VENTANAS		153,85 m2	122,24 m2
6 y 7	Baja	10.000 10.000	10.000	10.000
	TOTAL		70,24 m2	56,37 m2
	ICTAL X 2 VENTANAS		153,85 m2	122,24 m2

Yahenis	Yahenis	Yahenis	Yahenis	Yahenis
9 y 12	Yahenis	Yahenis	Yahenis	Yahenis
10 y 11	Yahenis	Yahenis	Yahenis	Yahenis
13 y 16	Yahenis	Yahenis	Yahenis	Yahenis
14 y 15	Yahenis	Yahenis	Yahenis	Yahenis















***"OUR EXPERIENCE IS YOUR GUARANTEE"***