



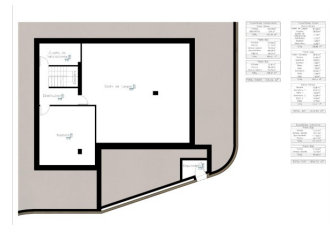
REF: # 10670

CALPE/MORAIRA (BENISSA COAST)



#### INFO

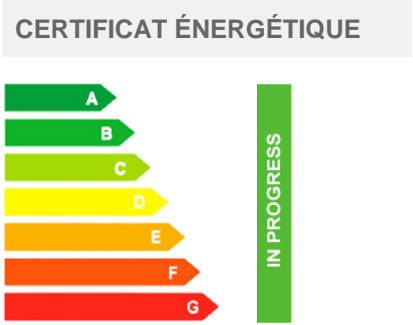
<b>PRIX:</b>	1.495.000 €
<b>TYPE:</b>	Villa
<b>CITY:</b>	Calpe/Moraira (Benissa Coast)
<b>CHAMBRES:</b>	4
<b>Ba ENFANTS:</b>	3
<b>Built ( m2 ):</b>	356
<b>pas ( m2 ):</b>	1.040
<b>Terrasse ( m2 ):</b>	-
<b>A ENFANTS:</b>	-
<b>de plante:</b>	-
<b>MESSAGE</b>	-



#### DESCRIPTION

**NEW BUILD VILLA WITH THE SEA VIEWS IN BENISSA** New Build project on the Benissa coast located very close to the beautiful La Fustera beach and shops, restaurants and services, all less than approximately 300m away. New Build villa exclusive and modern designed with functional architecture creating practical and aesthetically pleasing spaces, is distributed over 3 floors that rise on a 1,040m2 plot with sea views, The villa has three 3 (2 of them en-suite), 3 full bathrooms, a guest toilet and an exterior toilet, a kitchen with an island an open-concept living-dining room creating a unique and open-plan room. Also a large laundry room and multipurpose room. There is the possibility of creating a fourth en-suite bedroom on the basement floor Modern kitchen with laminated or lacquered doors, soft-closing drawers, porcelain bench, includes space between the bench and tall cabinets. Appliances included: oven, micro, ceramic hob, extractor hood, fridge

and Bosch brand dishwasher or similar. Outside is the 40m2 pool surrounded by a large terrace and low-maintenance designer gardens with automatic irrigation. In addition, the villa also has a large stamped concrete parking lot, covered by a high-quality canvas awning. Benissa is located towards the northern end of the Costa Blanca, just off the A-7 Motorway; the trip to and from Alicante airport takes just over one hour. The town is small, but enchanting with its medieval architecture and charming plazas. Although only 5 km distance from the sea – as the crow flies, the nearest beaches by road are approximately 11 km away and the seaside towns of Calpe (to the south) and Moraira (to the north east) are approximately 12 km distance. The views of the Mediterranean, the weather, wild nature, the quality of the light, the towns architecture, Benissa will seduce you. Alicante airport located 1 hour away.



## VIEW

- Panoramico

## JARD RIVIÈRE ET TERRASSES N

- Terrasse ouverte
- Jard RIVER n privée

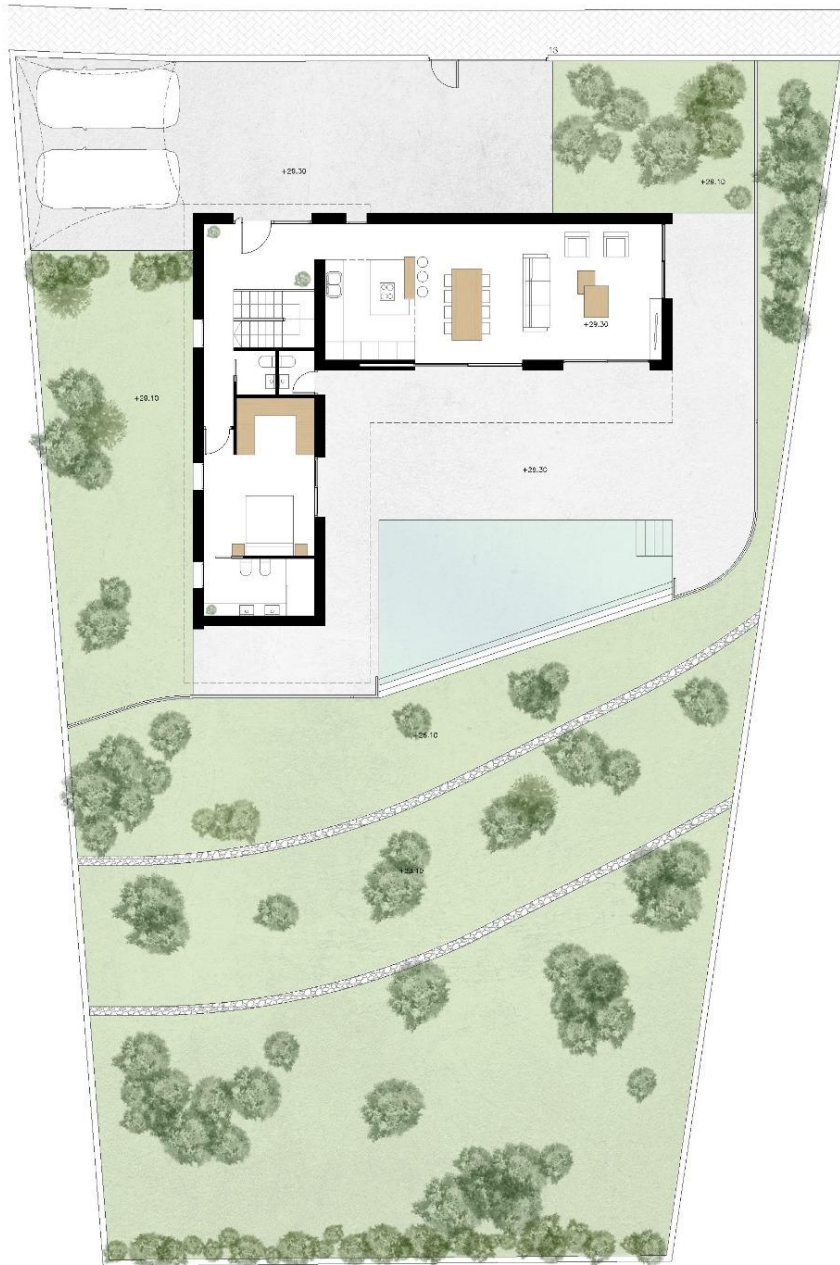
## EXTRA

- Porte de sécurité
- stockage

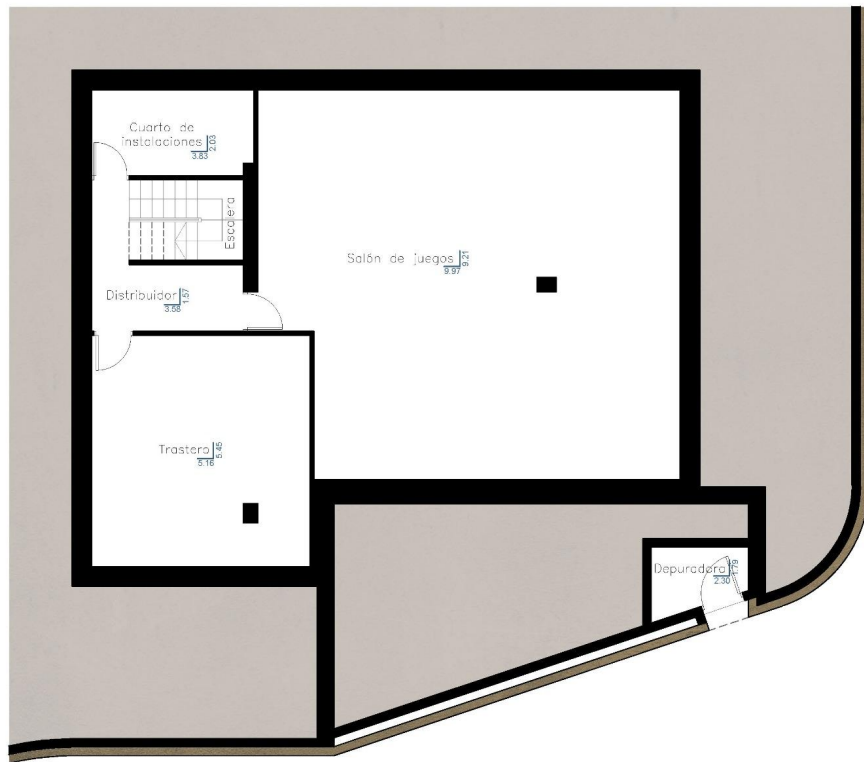








Dettaglio



Superficies Construidas	
Planta Sótano	
Vivienda	162.09m²
Depuradora	4.81m²
TOTAL	167.90 m²
Planta Baja	
Vivienda	121.82m²
Porche	41.71m²
terrace abierta	72.14m²
aparcamiento	98.09m²
Piscina	35.11m²
TOTAL	369.87 m²
Planta Baja	
Vivienda	72.87m²
Porche	24.02m²
terrace abierta	70.70m²
TOTAL	167.59 m²
TOTAL CONST.	
	705.04 m²

Superficies Cálida	
Planta Sótano	
Salón de juegos	87.33m²
Trastero	28.03m²
Cuarto de instalaciones	7.74m²
Distribuidor	7.52m²
Escalera	4.96m²
Depuradora	2.29m²
TOTAL	138.89 m²

Planta Baja	
Salón-Comedor	38.01m²
Cocina	13.85m²
Vestíbulo	10.31m²
Escalera	4.96m²
Paseo	4.66m²
Ases	1.99m²
Dormitorio	18.36m²
Baño	7.08m²
Ases	1.81m²
TOTAL	99.11 m²

Planta Primera	
Estudio	10.87m²
Dormitorio 1	10.31m²
Baño 1	3.94m²
Dormitorio 2	13.54m²
Baño 2	6.88m²
Paseo	5.78m²
TOTAL	75.37 m²

TOTAL INT. 313.34 m²

Superficies exteriores	
Planta Baja	
Porche	43.57m²
Terraza abierta	22.77m²
aparcamiento	111.65m²
Piscina	35.11m²
TOTAL	221.61m²

Planta Baja	
Porche	24.03m²
Terraza abierta	70.70m²
TOTAL	94.73m²

TOTAL EXT. 359.74 m²



Superficies Construidas	
Planta Sótano	
Vivienda	162.09m²
Depuradora	4.81m²
TOTAL	167.90 m²
Planta Baja	
Vivienda	121.82m²
Porche	41.71m²
terrace abierta	72.14m²
aparcamiento	98.09m²
Piscina	35.11m²
TOTAL	369.87 m²
Planta Baja	
Vivienda	72.87m²
Porche	24.02m²
Terraza abierta	70.70m²
TOTAL	167.59 m²
TOTAL CONST.	
	705.04 m²

Superficies Cálida	
Planta Sótano	
Salón de juegos	87.33m²
Trastero	28.03m²
Cuarto de instalaciones	7.74m²
Distribuidor	7.52m²
Escalera	4.96m²
Depuradora	2.29m²
TOTAL	138.89 m²

Planta Baja	
Salón-Comedor	38.01m²
Cocina	13.85m²
Vestíbulo	10.31m²
Escalera	4.96m²
Paseo	4.66m²
Ases	1.99m²
Dormitorio	18.36m²
Baño	7.08m²
Ases	1.81m²
TOTAL	99.11 m²

Planta Primera	
Estudio	10.87m²
Dormitorio 1	10.31m²
Baño 1	3.94m²
Dormitorio 2	13.54m²
Baño 2	6.88m²
Paseo	5.78m²
TOTAL	75.37 m²

TOTAL INT. 313.34 m²

Superficies exteriores	
Planta Baja	
Porche	43.57m²
Terraza abierta	22.77m²
aparcamiento	111.65m²
Piscina	35.11m²
TOTAL	221.61m²

Planta Baja	
Porche	24.03m²
Terraza abierta	70.70m²
TOTAL	94.73m²

TOTAL EXT. 359.74 m²





Superficies Construidas	
Planta Sótano	
Vivienda	187.09 m <sup>2</sup>
Deposición	4.91 m <sup>2</sup>
TOTAL	192.00 m <sup>2</sup>

Planta Baja	
Vivienda	121.82 m <sup>2</sup>
Porche	41.31 m <sup>2</sup>
Terraza abierta	72.11 m <sup>2</sup>
Apropiamiento	68.09 m <sup>2</sup>
Paseo	35.11 m <sup>2</sup>
TOTAL	338.44 m <sup>2</sup>

Planta Baja	
Vivienda	73.87 m <sup>2</sup>
Porche	24.00 m <sup>2</sup>
Terraza abierta	70.77 m <sup>2</sup>
TOTAL	168.64 m <sup>2</sup>

TOTAL CONST. 705.04 m<sup>2</sup>

Superficies Cálidas	
Planta Sótano	
Salón de Jueces	87.03 m <sup>2</sup>
Tratado	28.03 m <sup>2</sup>
Cuarto de Instrucciones	7.74 m <sup>2</sup>
Distribuidor	7.52 m <sup>2</sup>
Entrada	4.86 m <sup>2</sup>
Deposición	3.29 m <sup>2</sup>
TOTAL	138.49 m <sup>2</sup>

Planta Baja	
Salón-Comedor	38.01 m <sup>2</sup>
Cocina	13.85 m <sup>2</sup>
Vestíbulo	8.47 m <sup>2</sup>
Escalera	4.86 m <sup>2</sup>
Paseo	4.86 m <sup>2</sup>
Asa	1.95 m <sup>2</sup>
Dormitorio	18.26 m <sup>2</sup>
Baño	7.02 m <sup>2</sup>
Asa	1.81 m <sup>2</sup>
TOTAL	99.11 m <sup>2</sup>

Planta Primera	
Estudio	10.87 m <sup>2</sup>
Dormitorio 1	10.37 m <sup>2</sup>
Baño 1	3.84 m <sup>2</sup>
Dormitorio 2	13.54 m <sup>2</sup>
Baño 2	6.08 m <sup>2</sup>
Paseo	9.78 m <sup>2</sup>
TOTAL	75.37 m <sup>2</sup>

TOTAL INT. 313.34 m<sup>2</sup>

Superficies exteriores	
Planta Baja	
Porche	43.57 m <sup>2</sup>
Terraza abierta	72.77 m <sup>2</sup>
Apropiamiento	111.86 m <sup>2</sup>
Paseo	35.11 m <sup>2</sup>
TOTAL	263.31 m <sup>2</sup>

Planta Baja	
Porche	24.00 m <sup>2</sup>
Terraza abierta	70.77 m <sup>2</sup>
TOTAL	94.77 m <sup>2</sup>

TOTAL EXT. 358.08 m<sup>2</sup>











***"OUR EXPERIENCE IS YOUR GUARANTEE"***