



REF: # 10610

BENITACHELL



INFO

PRIX: 2.010.000 €

TYPE: Villa

CITY: Benitachell

CHAMBRES: 3

Ba ENFANTS: 3

Built (m2): 469

pas (m2): 829

Terrasse (m2): -

A ENFANTS: -

de plante: -

MESSAGE -



DESCRIPTION

NEW BUILD LUXURY VILLA IN CUMBRE DEL SOL New Build villa with modern architecture located in one of the residential areas in Cumbre del Sol. Residential is made up of a group of unique modern villas, wonderfully adapted to the characteristics of the land and the environment, betting on spatial fluidity, with natural light and views as perfect allies. A serene and welcoming aesthetic, which combines natural stone with ceramic coverings, white facades, and the blue of the sea. The interior layout of this modern villa invites you to enjoy your home, both from an intimate and familiar character and in a more open and social way. On the top floor there are 3 bedrooms of the house. On the middle floor is the day area, with an open-plan kitchen, living room and dining room which opens onto the terrace and pool area through sliding glass enclosures, integrating the different spaces. On the lower floor we find a large porch, a unique chill out to enjoy the incredible views of this property in a more private way. A modern villa with an optimal distribution, top-level qualities, conceived and designed to experience the Mediterranean. Villa located in one of the most exclusive areas of the Cumbre del Sol Residential Resort, a paradise facing the Mediterranean. With an enviable location, next to spectacular coves and beaches, surrounded by

nature, with a unique gastronomy and leisure offer, well connected to two international airports less than 100 km away, and strategically located between Alicante and Valencia city, a paradise on the Coast White North. Residential is part of the Cumbre del Sol urbanization, so the homes that are located in it enjoy all the services that a consolidated urbanization such as Cumbre del Sol offers, which has a commercial area with a supermarket, hairdresser , pharmacy, bars and restaurants, Lady Elizabeth International School and a diverse sports offer with tennis and paddle courts, hiking trails, equestrian centre, without forgetting Moraig Beach with beach bars and Llebeig and Los Tiestos coves, coves of Great beauty and charm. And all the catering and leisure offer of Benitachell and the municipalities of Xàbia (just 7 km away) and Teulada-Moraira (just 4 km away), all of them tourist municipalities of recognized international prestige, and at an equidistant distance from Alicante and Valencia city.



VIEW

- Panoramico

JARD RIVIÈRE ET TERRASSES N

- Terrasse ouverte
- Jard RIVER n privée

EXTRA

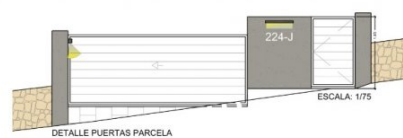
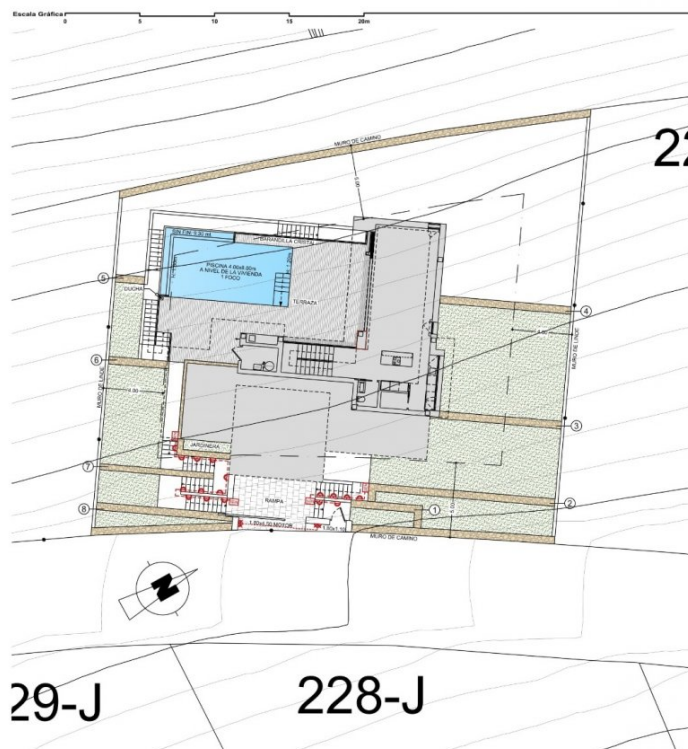
- Porte de sécurité



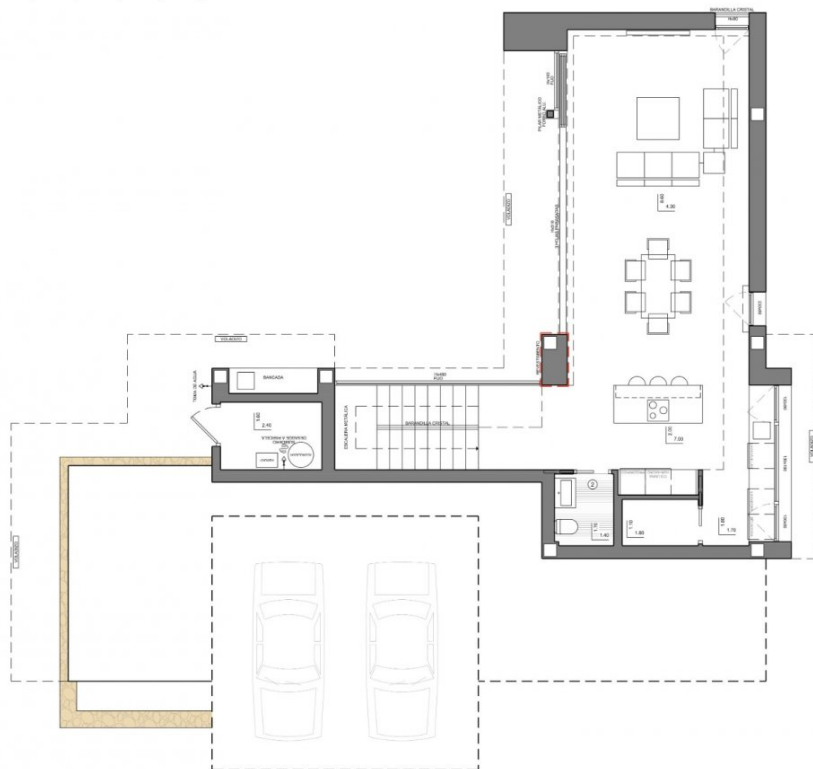




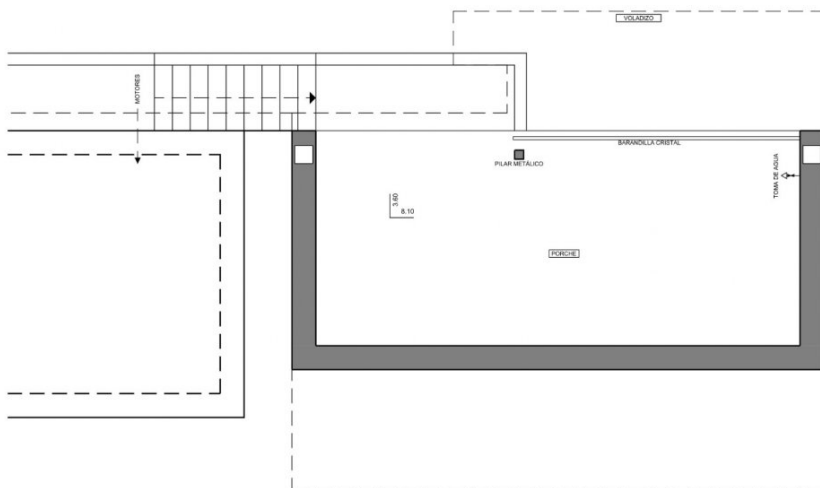




Escala Gráfica 0 1 2 3 4 5 6m



Escala Gráfica 0 1 2 3 4 5 6m



"OUR EXPERIENCE IS YOUR GUARANTEE"