



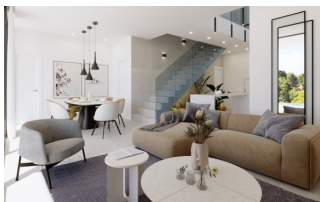
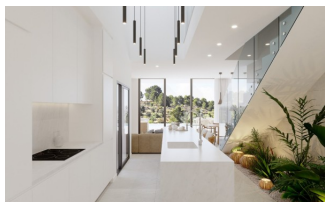
REF: # 10609

FINESTRAT



INFO

PRIX:	795.000 €
TYPE:	Villa
CITY:	Finestrat
CHAMBRES:	3
Ba ENFANTS:	4
Built (m2):	192
pas (m2):	500
Terrasse (m2):	-
A ENFANTS:	-
de plante:	-
MESSAGE	-



DESCRIPTION

NEW BUILD VILLAS IN BALCON DE FINESTRAT New build villas in privileged location of Finestrat, adjoins the Alfarelles de la Tapiada river in one of its sides, the famous Puig Campana mountain on its back and the Puig golf course. The first phase of this residential consists of 16 independent single-storey villa. Several models of different typologies, signature homes, private pools, local stone, exceptional diffusion of natural light, optimal energy efficiency, perfect integration of the interior space and exterior, are the characteristics of the innovative architecture of Resort, where the nature and comfort merge with the most innovative design. Strong environmental credentials are also a priority for us. These magnificent villas have 3 bedrooms, with fitted wardrobes, 4 bathrooms (one of them en suite), an open living-dining room with a fully equipped kitchen, a gallery, hall with wardrobe, ducted air conditioning, garden and private pool, parking space. Resort incorporates energy-efficient facilities such as atherothermal systems or the solar energy, in order to achieve high energy performance throughout the year. The minimum building density has been a constant throughout the project, with the aim that each house coexists with its surroundings and integrates naturally in the

privileged setting that surrounds it. This exclusive residential offers premium security and privacy systems in each property, based on 4 main points: - Existence of 1 entrance and 1 exit, both guarded 24 hours. - Perimeter limited only by the river Alfarelles de la Tapiada, the surrounding pine forest and its own internal streets; which means that the access for the owners is totally private and all the properties belong to the residential complex. All villas are designed and built with security cameras and alarm systems private (optionally connected to the resort's call center). Resort is equipped with its own security vehicle that watches over the sector 24 hours a day. A place located between the mountains and the sea and a true paradise for lovers of tranquility and outdoor sports. In addition, just 5 minutes by car from the beach of Benidorm. Also stands out for its proximity to the La Marina shopping center and the park Terra Mitica theme. Villas located 40 minutes from Alicante airport .



VIEW

- Panoramico

JARD RIVIÈRE ET TERRASSES N

- Terrasse ouverte
- Jard RIVER n privée

EXTRA

- Porte de sécurité





FLOOR PLAN
SWIMMING POOL LEVEL



SWIMMING POOL LEVEL m²

INDOOR

1 Living-Dinning-Kitchen	44,91
2 Utility room	3,01
3 Toilet	3,00
4 Bedroom 3	13,62
5 Bathroom 3	4,32
BUILT AREA	84,33

OUTDOOR

6 Terrace	126,21
7 Swimming Pool	42,00
8 Garden 1	71,15
9 Garden 2	35,70

BUILT AREA

STREET LEVEL	94,08
SWIMMING POOL LEVEL	84,33
TOTAL BUILT AREA	178,41

PLOT AREA 500,90



STREET LEVEL m²

INDOOR

1 Hall	6,62
2 Corridor	4,07
3 Bedroom 1	15,14
4 Bathroom 1	4,10
5 Bedroom 2	13,53
6 Bathroom 2	5,24
BUILT AREA	94,08

OUTDOOR

7 Terrace 1	13,40
8 Terrace 2	14,81
9 Entrance	23,35
10 Car Parking	52,32
11 Garden	15,30

BUILT AREA

STREET LEVEL	94,08
SWIMMING POOL LEVEL	84,33
TOTAL BUILT AREA	178,41

PLOT AREA 500,90







"OUR EXPERIENCE IS YOUR GUARANTEE"