



REF: # 10539

ORIHUELA COSTA



INFO

PRIX: 925.000 €

TYPE:

CITY: Orihuela
Costa

CHAMBRES: 2

Ba ENFANTS: 2

Built (m2): 98

pas (m2): -

Terrasse (m2): -

A ENFANTS: -

de plante: -

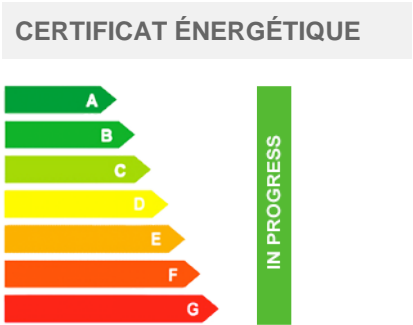
MESSAGE -



DESCRIPTION

NEW BUILD RESIDENTIAL COMPLEX IN LAS COLINAS GOLF New Build developments consists of 15 luxury apartments with huge terraces overlooking the surrounding natural green area. We have made a combinations of modern and traditional Mediterranean Architecture. Our idea from the beginning has been to make the apartments, with a material description including amongst others, underfloor heating with water, quooker tap, air renewal system, sound reducing ceilings, laquered kitchens, smart home system and much more. When taking the privileged location and views into consideration we believe that complex offers the ideal conditions to meet the criteria of clients with exquisite taste. The third floor consists of 3 apartments: 2 apartments comes with 3 bedrooms, 3 bathrooms and a guest toilet and 1 apartment comes with 2 bedrooms, 2 bathrooms. From the apartments you have direct access to big terraces in the same level as the apartment. You have furthermore a staircase taking you to solarium, where each top floor apartment has a private swimming pool, a toilet, an outdoor kitchen with a small lift from the kitchen downstairs and much more. On Las Colinas Golf [amp;]

Country Club you will furthermore find a wide variety of amenities for the property owners such as tennis, padel-tennis, fitness, massage, golf, trekking and much more. Inside Las Colinas Golf [amp;] Country Club you will also find a number of restaurants as well as a minimarket with fresh baked bread and much more. You will enjoy 200,000 square meters of beautiful Mediterranean landscapes and you will be able to make scenic walks through the lush indigenous, native flora and the extensive fields of orange and lemon groves. Complex located 40 minutes from Alicante airport and 1 hour Murcia - Corvera airport.



VIEW

- Panoramico

**JARD RIVIÈRE ET
TERRASSES N**

- Terrasse ouverte

EXTRA

- Porte de sécurité
- stockage

PROPERTY GALLERY















ESC. B - PLANTA 3ª

	ESC. A			ESC. B		
P03	13	14	15			
P02	09	10	11	12		
P01	05	06	07	08		
P00	01	02	03	04		
S01	PARKING					

Sup. construida vivienda: 98,50 m²
 Sup. terraza cubierta: 9,00 m²
 Sup. terraza descubierta: 66,00 m²
 SUPERFICIE TOTAL: 173,50 m²
 Piscina: 17,90 m²



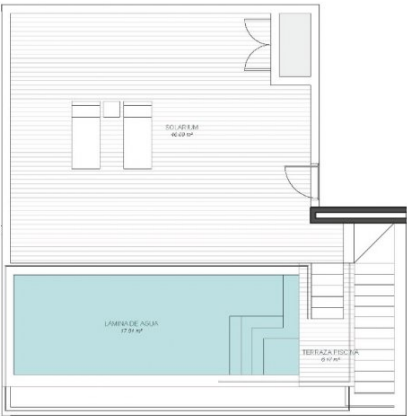
Escala: 1 : 75



ESC. B - SOLARIUM

	ESC A				ESC B			
P03	13	14	15					
P02	09	10	11	12				
P01	05	06	07	08				
P00	01	02	03	04				
S01	PARKING							

Sup. construida vivienda: 98,50 m²
Sup. terraza cubierta: 9,00 m²
Sup. terraza descubierta: 66,00 m²
SUPERFICIE TOTAL: 173,50 m²
Piscina: 17,80 m²



Escala: 1:75







"OUR EXPERIENCE IS YOUR GUARANTEE"