



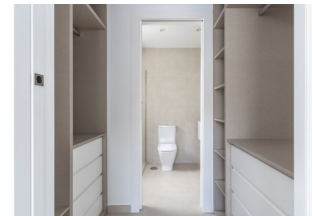
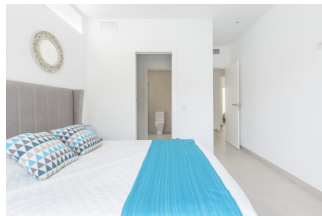
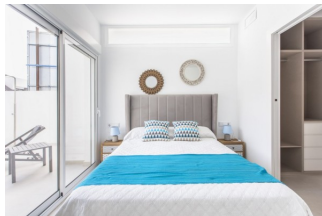
REF: # 10479

COSTA MURCIA



INFO

PRIX:	245.000 €
TYPE:	Appartement
CITY:	Costa Murcia
CHAMBRES:	3
Ba ENFANTS:	2
Built (m2):	83
pas (m2):	53
Terrasse (m2):	30
A ENFANTS:	-
de plante:	-
MESSAGE	-



DESCRIPTION

NEW BUILD BUNGALOWS IN SANTIAGO DE LA RIBERA New Build project with only 10 bungalow apartments, 5 Ground Floor and 5 top Floor apartments, all them with a private pool in Santiago de la Ribera. These apartments will be built to a high standard with a modern, light, open approach incorporated into the design, boasting 3 bedrooms and 2 bathrooms. The ground floor properties will have a back and a front garden with pool and the top floor properties will have a solarium with pool. Kitchen appliances and the complete installation of Air condition are included. Complex build in a perfect location, Santiago de la Ribera, a lovely town that sits on the shores of the Mar Menor. It is the coastal area of the town of San Javier and started life as a simple fishing village. It has now grown into a popular holiday destination, attracting not only the Spanish but also tourists from all over Europe. Santiago has a modern feel, although it still maintains its 'fishing village' atmosphere. It has a very beautiful promenade, which is lined by majestic palm trees and 2 kilometres of wonderful sandy beaches. From here you can take a boat trip out across the calm waters of the Mar Menor, to the La Manga Strip on the opposite side. The main shopping area is really in the town of San

Javier, but there are some some shops in the narrow streets to browse, try visiting on a Wednesday morning when there is a large street market. The villas are walking distance to shops, bars, restaurants, Dos Mares shopping centre and the fantastic beaches of the Mar Menor and 20 minutes to the popular Zenia Boulevard - everything is within easy reach! Just 30 minutes from Cartagena city and the new International Murcia airport.



VIEW

- Panoramico

JARD RIVIÈRE ET TERRASSES N

- Terrasse ouverte
- Jard RIVER n privée

EXTRA

- Porte de sécurité

PROPERTY GALLERY



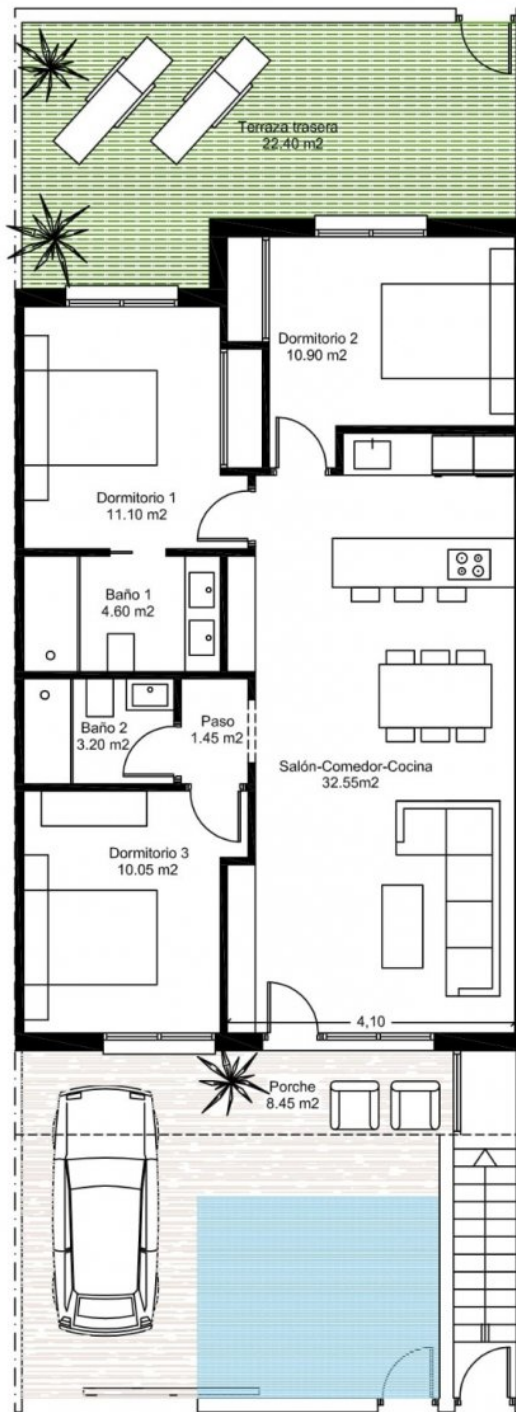












Planta baja

Sup. Construida	83.35 m2
Sup. Util Interior	73.85 m2
Sup. Util Exterior	52.43m2





"OUR EXPERIENCE IS YOUR GUARANTEE"