



REF: # 10240

FINESTRAT



#### INFO

PRIX:	1.150.000 €
TYPE:	Villa
CITY:	Finestrat
CHAMBRES:	3
Ba ENFANTS:	4
Built ( m2 ):	522
pas ( m2 ):	422
Terrasse ( m2 ):	-
A ENFANTS:	-
de plante:	-
MESSAGE	-



#### DESCRIPTION

**NEW BUILD LUXURY VILLA IN FINESTRAT WITH SEA VIEWS** New Build Luxury villa located in Finestrat close to the beaches and all services you would need. Villa with 3 bedrooms and 4 bathrooms, open plan kitchen with lounge area, terrace with private pool and magnificent views over Benidorm, basement with the double garage. This development is perfectly located in a natural enclave of the Costa Blanca and offers incredible views of the Benidorm skyline, Finestrat cove and El Puig Campana. Benidorm is just a five-minute drive from the properties and offers all the services you would need including shops, bars, restaurants, supermarkets, banks, pharmacies and several private international schools. Close to the beaches of Levante, Poniente and Cala de Finestrat, with more than 6km in length that are among the best in Europe awarded by the European Union with Blue Flags. All leisure services such as the theme parks of Aqua Natura, Terra Mítica, Terra Natura, Aqualandia and Mundomar, Sierra Cortina and Villaitana Golf courses, hiking and climbing in Puig Campana an incomparable natural setting or enjoy of nautical sports. Distance to the sea 4 km, to the airport 26 km and to the golf 1km.

#### CERTIFICAT ÉNERGÉTIQUE



**VIEW**

- Panoramico

**PARKING PAS. CAR**

Garage no. Car : 1

**JARD RIVIÈRE ET  
TERRASSES N**

- Terrasse ouverte
- Jard RIVER n privée

**EXTRA**

- Porte de sécurité





































VILLA 1



PLANTA BAJO RASANTE  
BASEMENT FLOOR

#### SUPERFICIES UTILES

##### PLANTA PRINCIPAL

SALÓN - COMEDOR - COCINA	51.58 m <sup>2</sup>
DISTRIBUIDOR	8.30 m <sup>2</sup>
DORMITORIO 1	19.03 m <sup>2</sup>
DORMITORIO 2	19.00 m <sup>2</sup>
DORMITORIO 3	12.81 m <sup>2</sup>
BAÑO 1	4.83 m <sup>2</sup>
BAÑO 2	3.78 m <sup>2</sup>
BAÑO 3	4.27 m <sup>2</sup>

##### PLANTA BAJO RASANTE

GARAJE	45.32 m <sup>2</sup>
BAJO RASANTE	109.89 m <sup>2</sup>
BAÑO	4.34 m <sup>2</sup>
ZONA AEROTERMIA	2.62 m <sup>2</sup>
PATIO	44.68 m <sup>2</sup>

TOTAL SUP. UTIL  
USEFUL AREA

330,45 m<sup>2</sup>

#### SUP. CONSTRUIDA (tipo B)

m<sup>2</sup>

##### PLANTA PRINCIPAL

MAIN FLOOR

142,25

##### TERRAZAS CUBIERTAS

COVERED TERRACE

4,87

##### PLANTA BAJO RASANTE

BASEMENT FLOOR

189,99

##### TOTAL SUP. CONSTRUIDA

TOTAL BUILT AREA

337,11 m<sup>2</sup>

##### SUP. PARCELA

TOTAL PLOT AREA

375,16 m<sup>2</sup>

##### PISCINA

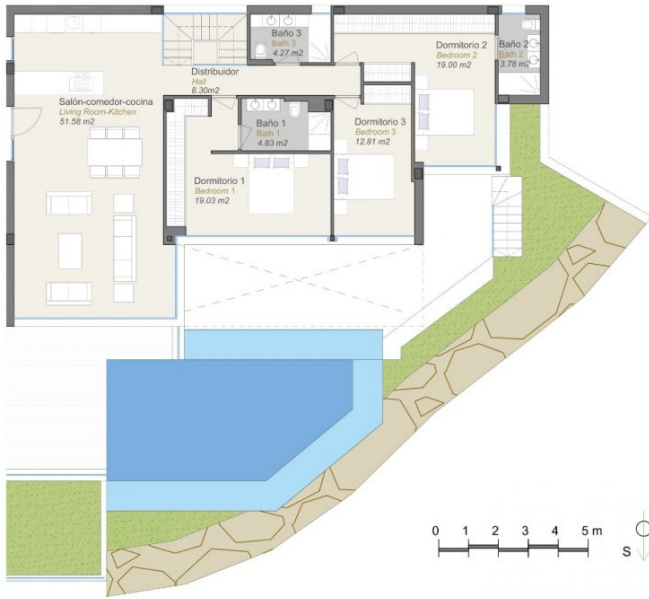
POOL

30,00 m<sup>2</sup>





VILLA 1



PLANTA PRINCIPAL  
MAIN FLOOR

SUPERFICIES UTILES

PLANTA PRINCIPAL	
SALÓN - COMEDOR - COCINA	51,58 m <sup>2</sup>
DISTRIBUIDOR	8,30 m <sup>2</sup>
DORMITORIO 1	19,03 m <sup>2</sup>
DORMITORIO 2	19,00 m <sup>2</sup>
DORMITORIO 3	12,81 m <sup>2</sup>
BAÑO 1	4,83 m <sup>2</sup>
BAÑO 2	3,78 m <sup>2</sup>
BAÑO 3	4,27 m <sup>2</sup>
TOTAL SUP. UTIL	123,60 m <sup>2</sup>
USEFUL AREA	

SUP. CONSTRUIDA (tipo B)	m <sup>2</sup>
PLANTA PRINCIPAL	142,25
MAIN FLOOR	
TERRAZAS CUBIERTAS	4,87
COVERED TERRACE	
PLANTA BAJO RASANTE	189,99
BASEMENT FLOOR	
TOTAL SUP. CONSTRUIDA	337,11 m <sup>2</sup>
TOTAL BUILT AREA	

SUP. PARCELA	375,16 m <sup>2</sup>
TOTAL PLOT AREA	
PISCINA	30,00 m <sup>2</sup>
POOL	



"OUR EXPERIENCE IS YOUR GUARANTEE"