



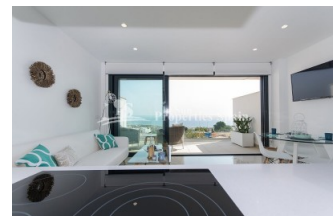
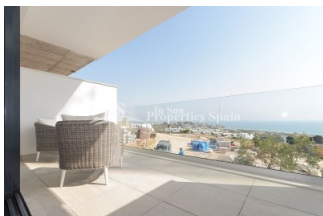
REF: # 5769

ALICANTE



INFO

PRIX:	234.000 €
TYPE:	Appartement
CITY:	Alicante
CHAMBRES:	2
Ba ENFANTS:	2
Built (m2):	-
pas (m2):	156
Terrasse (m2):	10
A ENFANTS:	
de plante:	-
MESSAGE	-

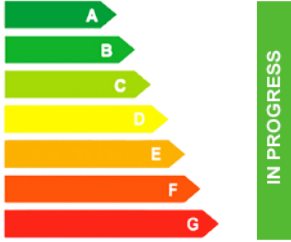


DESCRIPTION

Delivery from Oct 2019. Superb new development of APARTMENTS/DUPLEX in GRAN ALACANT. A privileged location with STUNNING VIEWS of the Mediterranean Sea, in an environment of protected natural areas and with good services and communication. There are two types of Apartments for sale. TYPE A (3 Bedroom) comprises of ground floor parking space, hallway, bedroom, bathroom, open plan lounge, dining area and kitchen plus terrace. To the first floor there are a further 2 bedrooms, 2 bathrooms, laundry room and further terrace. prices from €306,000. TYPE B (2 bedrooms) comprises of ground floor parking space, basement, laundry room and patio. To the first floor 2 bedrooms, 2 bathrooms, open plan kitchen, lounge and dining area plus terrace. Prices from €234,000. All come with underfloor heating in bathrooms, pre-installation of air conditioning ducts and motorised blinds in bedrooms... Access to communal pool and gardens. Excellent connections to Alicante city and Airport. Walking distance to the beaches and just a few kilometers from Alicante, Elche and Santa Pola. Close to the marina, train stations and approx. 5 minutes from the international airport. Nearby there is a wide range of services with access to hospitals,

shopping centres, entertainment and golf courses.



STYLE	VIEW	DISTANCE :	POSITION
<ul style="list-style-type: none"> moderne contemporain 	<ul style="list-style-type: none"> Panoramico Ocean 	Beach : 500 m aéroport: 10 Km : 500 m	Sur
MEUBLÉ	PARKING PAS. CAR	ÉTAGE	CUISINE
<ul style="list-style-type: none"> Vide 	: 1	<ul style="list-style-type: none"> tuiles Stone 	<ul style="list-style-type: none"> cuisine cuisine équipée granit
JARD RIVIÈRE ET TERRASSES N	EXTRA	CERTIFICAT ÉNERGÉTIQUE	
<ul style="list-style-type: none"> Terrasse couverte Terrasse ouverte Jard RIVER Communauté 	<ul style="list-style-type: none"> intégré Porte de sécurité Double vitrage Laundry 	 <p>The image shows a vertical energy efficiency scale with seven horizontal bars labeled A through G. Bar A is dark green, B is green, C is light green, D is yellow, E is orange-yellow, F is orange, and G is red. To the right of these bars is a vertical green bar with the text 'IN PROGRESS' written vertically inside it.</p>	

"OUR EXPERIENCE IS YOUR GUARANTEE"