



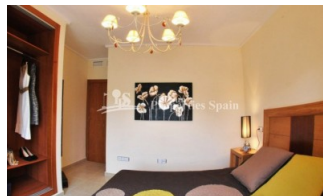
REF: # 4689

QUESADA-ROJALES (DONA PEPA)



#### INFO

PRIX:	169.900 €
TYPE:	Maison
CITY:	Quesada-Rojales (Dona Pepa)
CHAMBRES:	2
Ba ENFANTS:	2
Built ( m2 ):	82
pas ( m2 ):	-
Terrasse ( m2 ):	-
A ENFANTS:	-
de plante:	-
MESSAGE	-




#### DESCRIPTION

This is a lovely 2 bedroom 82m2 'Fortuna Model' Townhouse with 35m2 garden situated within a completely gated community located in DONA PEPA, close to CIUDAD QUESADA with a main entrance and exit. There are three main swimming pools and two additional pools for children. One of the main pools also has a Jacuzzi and hydro massage jet. There is an ample parking throughout the residential, however there is also a private parking space in the underground car park of the residential. The property is located close to the Playpark and Health centre within Doña Pepa, which is a modern urbanisation belonging to Ciudad Quesada and has all the amenities which include supermarkets, bars, hotel and shops as well as a bank. Ciudad Quesada town centre is a ten minute walk from Doña Pepa. In Ciudad Quesada itself you will find international supermarkets, restaurants, banks, a medical centre as well as a water park. The property is ideally located if you are a golf enthusiast, with La Marquesa Golf Club just a five minute drive away. The nearest beaches are at Guardamar/Campomar and La Mata ten minutes drive away.  
\*Furnishings at an additional cost Nearest Airports: San Javier (Murcia) -

Approx 30 minute drive Alicante Airport - Approx 30 minute drive



STYLE	VIEW	DISTANCE :	POSITION
<ul style="list-style-type: none"> <li>Méditerranée</li> </ul>	<ul style="list-style-type: none"> <li>Panoramico</li> </ul>	Beach : +10 Km aéroport: 40 Km : 1 Km	Ouest du Sud-Est
MEUBLÉ	PARKING PAS. CAR	ÉTAGE	CUISINE
<ul style="list-style-type: none"> <li>meublé</li> <li>Vide</li> </ul>	Garage no. Car : 1 : 1	<ul style="list-style-type: none"> <li>tuiles</li> <li>Stone</li> </ul>	<ul style="list-style-type: none"> <li>cuisine</li> <li>cuisine équipée</li> </ul>
JARD RIVIÈRE ET TERRASSES N	EXTRA	CERTIFICAT ÉNERGÉTIQUE	
<ul style="list-style-type: none"> <li>Terrasse couverte</li> <li>Terrasse ouverte</li> <li>Playground</li> <li>Paysage</li> <li>Jard RIVER n privée</li> <li>Jard RIVER Communauté</li> </ul>	<ul style="list-style-type: none"> <li>intégré</li> <li>Porte de sécurité</li> <li>Double vitrage</li> </ul>	 <p>The image shows a vertical energy efficiency scale with seven horizontal bars labeled A through G. The bars are colored in a gradient from green at the top to red at the bottom. A vertical green bar on the right side of the scale is labeled 'IN PROGRESS'.</p>	

**"OUR EXPERIENCE IS YOUR GUARANTEE"**